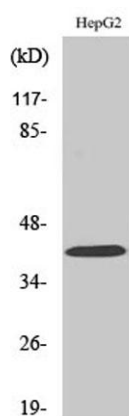


FAM80B rabbit pAb**Cat#: orb765199 (Manual)**

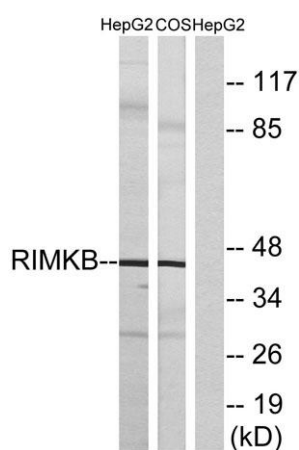
For research use only. Not intended for diagnostic use.

Product Name	FAM80B rabbit pAb
Host species	Rabbit
Applications	WB;ELISA
Species Cross-Reactivity	Human;Mouse;Rat;Monkey
Recommended dilutions	Western Blot: 1/500 - 1/2000. ELISA: 1/5000. Not yet tested in other applications.
Immunogen	The antiserum was produced against synthesized peptide derived from human RIMKB. AA range:177-226
Specificity	FAM80B Polyclonal Antibody detects endogenous levels of FAM80B protein.
Formulation	Liquid in PBS containing 50% glycerol, 0.5% BSA and 0.02% sodium azide..
Storage	Store at -20°C. Avoid repeated freeze-thaw cycles.
Protein Name	Beta-citryl-glutamate synthase B
Gene Name	RIMKLB
Cellular localization	Cytoplasm .
Purification	The antibody was affinity-purified from rabbit antiserum by affinity-chromatography using epitope-specific immunogen.
Clonality	Polyclonal

Concentration	1 mg/ml
Observed band	42kD
Human Gene ID	57494
Human Swiss-Prot Number	Q9ULI2
Alternative Names	RIMKLB; FAM80B; KIAA1238; Beta-citryl-glutamate synthase B; N-acetyl-aspartyl-glutamate synthetase B; NAAG synthetase B; NAAGS; Ribosomal protein S6 modification-like protein B
Background	cofactor: Binds 2 manganese ions per subunit.,similarity: Belongs to the rimK family.,similarity: Contains 1 ATP-grasp domain.,



Western Blot analysis of various cells using FAM80B Polyclonal Antibody diluted at 1:500



Western blot analysis of lysates from HepG2 and COS cells, using RIMKB Antibody. The lane on the right is blocked with the synthesized peptide.