

Epsin 1 rabbit pAb

Cat#: orb765159 (Manual)

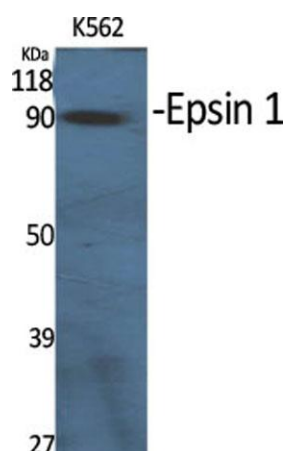
For research use only. Not intended for diagnostic use.

Product Name	Epsin 1 rabbit pAb
Host species	Rabbit
Applications	WB;ELISA
Species Cross-Reactivity	Human;Mouse;Rat
Recommended dilutions	Western Blot: 1/500 - 1/2000. ELISA: 1/40000. Not yet tested in other applications.
Immunogen	Synthesized peptide derived from Epsin 1 . at AA range: 140-220
Specificity	Epsin 1 Polyclonal Antibody detects endogenous levels of Epsin 1 protein.
Formulation	Liquid in PBS containing 50% glycerol, 0.5% BSA and 0.02% sodium azide..
Storage	Store at -20°C. Avoid repeated freeze-thaw cycles.
Protein Name	Epsin-1
Gene Name	EPN1
Cellular localization	Cytoplasm . Cell membrane ; Peripheral membrane protein . Nucleus . Membrane, clathrin-coated pit . Associated with the cytoplasmic membrane at sites where clathrin-coated pits are forming. Colocalizes with clathrin and AP-2 in a punctate pattern on the p
Purification	The antibody was affinity-purified from rabbit antiserum by affinity-chromatography using epitope-specific immunogen.

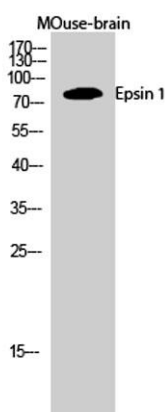
Clonality	Polyclonal
Concentration	1 mg/ml
Observed band	85kD
Human Gene ID	29924
Human Swiss-Prot Number	Q9Y6I3
Alternative Names	EPN1; Epsin-1; EH domain-binding mitotic phosphoprotein; EPS-15-interacting protein 1

Background

This gene encodes a member of the epsin protein family. The encoded protein binds clathrin and is involved in the endocytosis of clathrin-coated vesicles. Loss of function of this gene is associated with reduced tumor growth and progression in certain cancer types. [provided by RefSeq, Mar 2016],



Western Blot analysis of various cells using Epsin 1 Polyclonal Antibody diluted at 1:1000



Western Blot analysis of MOuse-brain cells using Epsin 1 Polyclonal Antibody diluted at 1:1000



Explore. Bioreagents.

www.biorbyt.com

Biorbyt Ltd
7 Signet Court, Swann Road, Cambridge, CB5 8LA. United Kingdom
Email: info@biorbyt.com | Phone: +44 (0)1223 859-353 | Fax: +44 (0)1223 280-240

Biorbyt LLC
68 TW Alexander Drive, Durham, NC 27709. United States
Email: info@biorbyt.com | Phone: +1 (415) 906-5211 | Fax: +1 (415) 651-8558