

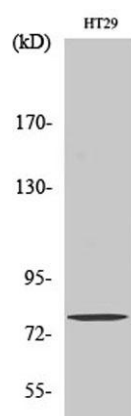
**Eps8L1 rabbit pAb****Cat#: orb765157 (Manual)**

For research use only. Not intended for diagnostic use.

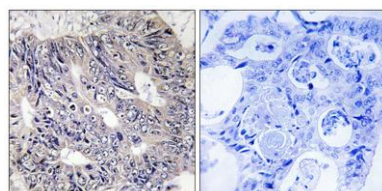
|                                 |  |
|---------------------------------|--|
| <b>Product Name</b>             | Eps8L1 rabbit pAb  |
| <b>Host species</b>             | Rabbit   |
| <b>Applications</b>             | WB;IHC;IF;ELISA  |
| <b>Species Cross-Reactivity</b> | Human;Mouse  |
| <b>Recommended dilutions</b>    | Western Blot: 1/500 - 1/2000. Immunohistochemistry: 1/100 - 1/300. Immunofluorescence: 1/200 - 1/1000. ELISA: 1/20000. Not yet tested in other applications. |
| <b>Immunogen</b>                | The antiserum was produced against synthesized peptide derived from human ES8L1. AA range:411-460  |
| <b>Specificity</b>              | Eps8L1 Polyclonal Antibody detects endogenous levels of Eps8L1 protein.  |
| <b>Formulation</b>              | Liquid in PBS containing 50% glycerol, 0.5% BSA and 0.02% sodium azide..   |
| <b>Storage</b>                  | Store at -20°C. Avoid repeated freeze-thaw cycles.   |
| <b>Protein Name</b>             | Epidermal growth factor receptor kinase substrate 8-like protein 1   |
| <b>Gene Name</b>                | EPS8L1   |
| <b>Cellular localization</b>    | Cytoplasm .  |
| <b>Purification</b>             | The antibody was affinity-purified from rabbit antiserum by affinity-chromatography using epitope-specific immunogen.  |
| <b>Clonality</b>                | Polyclonal   |

|                                |  |
|--------------------------------|--|
| <b>Concentration</b>           | 1 mg/ml  |
| <b>Observed band</b>           | 80kD   |
| <b>Human Gene ID</b>           | 54869  |
| <b>Human Swiss-Prot Number</b> | Q8TE68   |
| <b>Alternative Names</b>       | EPS8L1; DRC3; EPS8R1; PP10566; Epidermal growth factor receptor kinase substrate 8-like protein 1; EPS8-like protein 1; Epidermal growth factor receptor pathway substrate 8-related protein 1; EPS8-related protein 1 |

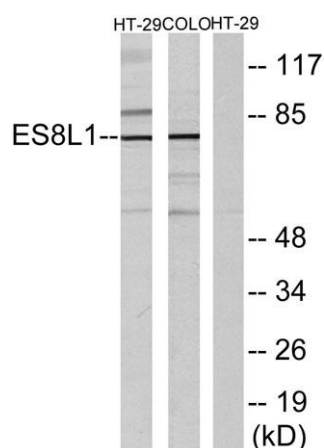
**Background** This gene encodes a protein that is related to epidermal growth factor receptor pathway substrate 8 (EPS8), a substrate for the epidermal growth factor receptor. The function of this protein is unknown. At least two alternatively spliced transcript variants encoding different isoforms have been found for this gene. [provided by RefSeq, Jul 2008],



**Western Blot analysis of various cells using Eps8L1 Polyclonal Antibody**



**Immunohistochemistry analysis of paraffin-embedded human colon carcinoma tissue, using ES8L1 Antibody. The picture on the right is blocked with the synthesized peptide.**



**Western blot analysis of lysates from COLO205 and HT-29 cells, using ES8L1 Antibody. The lane on the right is blocked with the synthesized peptide.**