

## EP4 rabbit pAb

**Cat#: orb765143 (Manual)**

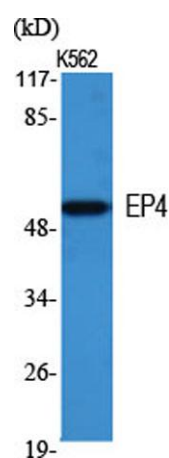
For research use only. Not intended for diagnostic use.

<b>Product Name</b>	EP4 rabbit pAb
<b>Host species</b>	Rabbit
<b>Applications</b>	WB;IF;ELISA
<b>Species Cross-Reactivity</b>	Human;Rat;Mouse;
<b>Recommended dilutions</b>	Western Blot: 1/500 - 1/2000. Immunofluorescence: 1/200 - 1/1000. ELISA: 1/20000. Not yet tested in other applications.
<b>Immunogen</b>	The antiserum was produced against synthesized peptide derived from human PE2R4. AA range:321-370
<b>Specificity</b>	EP4 Polyclonal Antibody detects endogenous levels of EP4 protein.
<b>Formulation</b>	Liquid in PBS containing 50% glycerol, 0.5% BSA and 0.02% sodium azide..
<b>Storage</b>	Store at -20°C. Avoid repeated freeze-thaw cycles.
<b>Protein Name</b>	Prostaglandin E2 receptor EP4 subtype
<b>Gene Name</b>	PTGER4
<b>Cellular localization</b>	Cell membrane; Multi-pass membrane protein.
<b>Purification</b>	The antibody was affinity-purified from rabbit antiserum by affinity-chromatography using epitope-specific immunogen.
<b>Clonality</b>	Polyclonal

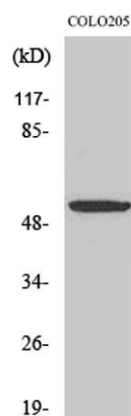
<b>Concentration</b>	1 mg/ml
<b>Observed band</b>	55kD
<b>Human Gene ID</b>	5734
<b>Human Swiss-Prot Number</b>	P35408
<b>Alternative Names</b>	PTGER4; PTGER2; Prostaglandin E2 receptor EP4 subtype; PGE receptor EP4 subtype; PGE2 receptor EP4 subtype; Prostanoid EP4 receptor

### Background

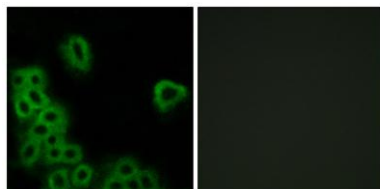
The protein encoded by this gene is a member of the G-protein coupled receptor family. This protein is one of four receptors identified for prostaglandin E2 (PGE2). This receptor can activate T-cell factor signaling. It has been shown to mediate PGE2 induced expression of early growth response 1 (EGR1), regulate the level and stability of cyclooxygenase-2 mRNA, and lead to the phosphorylation of glycogen synthase kinase-3. Knockout studies in mice suggest that this receptor may be involved in the neonatal adaptation of circulatory system, osteoporosis, as well as initiation of skin immune responses. [provided by RefSeq, Jul 2008],



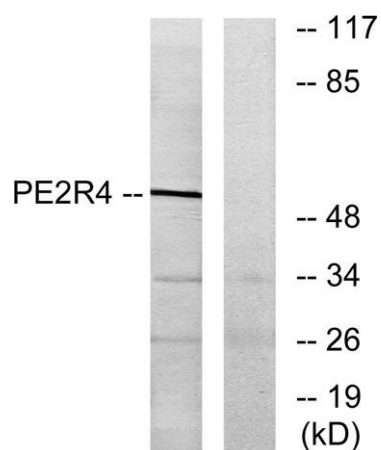
Western Blot analysis of various cells using EP4 Polyclonal Antibody



Western Blot analysis of COLO205 cells using EP4 Polyclonal Antibody



**Immunofluorescence analysis of MCF7 cells, using PE2R4 Antibody. The picture on the right is blocked with the synthesized peptide.**



**Western blot analysis of lysates from COLO205 cells, using PE2R4 Antibody. The lane on the right is blocked with the synthesized peptide.**