

**EOMES rabbit pAb****Cat#: orb765141 (Manual)**

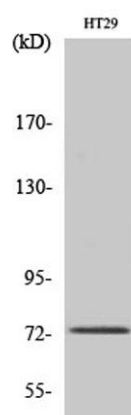
For research use only. Not intended for diagnostic use.

<b>Product Name</b>	EOMES rabbit pAb
<b>Host species</b>	Rabbit
<b>Applications</b>	WB;ELISA
<b>Species Cross-Reactivity</b>	Human;Mouse
<b>Recommended dilutions</b>	Western Blot: 1/500 - 1/2000. ELISA: 1/10000. Not yet tested in other applications.
<b>Immunogen</b>	The antiserum was produced against synthesized peptide derived from human EOMES. AA range:59-108
<b>Specificity</b>	EOMES Polyclonal Antibody detects endogenous levels of EOMES protein.
<b>Formulation</b>	Liquid in PBS containing 50% glycerol, 0.5% BSA and 0.02% sodium azide..
<b>Storage</b>	Store at -20°C. Avoid repeated freeze-thaw cycles.
<b>Protein Name</b>	Eomesodermin homolog
<b>Gene Name</b>	EOMES
<b>Cellular localization</b>	Nucleus .
<b>Purification</b>	The antibody was affinity-purified from rabbit antiserum by affinity-chromatography using epitope-specific immunogen.
<b>Clonality</b>	Polyclonal

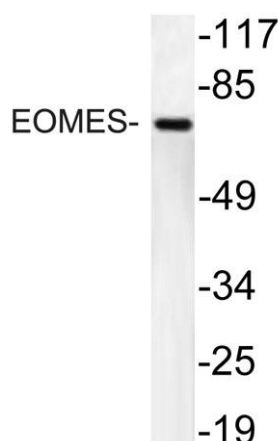
<b>Concentration</b>	1 mg/ml
<b>Observed band</b>	73kD
<b>Human Gene ID</b>	8320
<b>Human Swiss-Prot Number</b>	O95936
<b>Alternative Names</b>	EOMES; TBR2; Eomesodermin homolog; T-box brain protein 2; T-brain-2; TBR-2

### Background

This gene belongs to the TBR1 (T-box brain protein 1) sub-family of T-box genes that share the common DNA-binding T-box domain. The encoded protein is a transcription factor which is crucial for embryonic development of mesoderm and the central nervous system in vertebrates. The protein may also be necessary for the differentiation of effector CD8+ T cells which are involved in defense against viral infections. A similar gene disrupted in mice is shown to be essential during trophoblast development and gastrulation. Alternative splicing results in multiple transcript variants. [provided by RefSeq, May 2013],



**Western Blot analysis of various cells using EOMES Polyclonal Antibody cells nucleus extracted by Minute TM Cytoplasmic and Nuclear Fractionation kit (SC-003, Invent biotech, MN, USA).**



**Western blot analysis of lysate from HT29 cells, using EOMES antibody.**



Explore. Bioreagents.

[www.biorbyt.com](http://www.biorbyt.com)