

ENX-2 rabbit pAb**Cat#: orb765140 (Manual)**

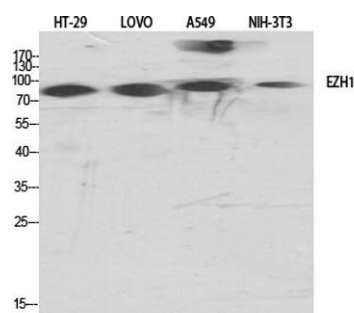
For research use only. Not intended for diagnostic use.

Product Name	ENX-2 rabbit pAb
Host species	Rabbit
Applications	WB;IHC;IF;ELISA
Species Cross-Reactivity	Human;Mouse;Monkey
Recommended dilutions	Western Blot: 1/500 - 1/2000. Immunohistochemistry: 1/100 - 1/300. Immunofluorescence: 1/200 - 1/1000. ELISA: 1/40000. Not yet tested in other applications.
Immunogen	The antiserum was produced against synthesized peptide derived from human EZH1. AA range:171-220
Specificity	ENX-2 Polyclonal Antibody detects endogenous levels of ENX-2 protein.
Formulation	Liquid in PBS containing 50% glycerol, 0.5% BSA and 0.02% sodium azide..
Storage	Store at -20°C. Avoid repeated freeze-thaw cycles.
Protein Name	Histone-lysine N-methyltransferase EZH1
Gene Name	EZH1
Cellular localization	Nucleus . Colocalizes with trimethylated 'Lys-27' of histone H3.
Purification	The antibody was affinity-purified from rabbit antiserum by affinity-chromatography using epitope-specific immunogen.
Clonality	Polyclonal

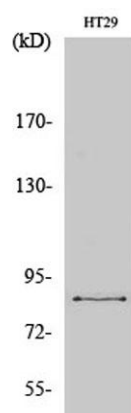
Concentration	1 mg/ml
Observed band	85kD
Human Gene ID	2145
Human Swiss-Prot Number	Q92800
Alternative Names	EZH1; KIAA0388; Histone-lysine N-methyltransferase EZH1; ENX-2; Enhancer of zeste homolog 1

Background

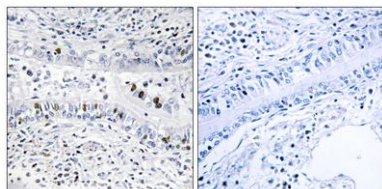
enhancer of zeste 1 polycomb repressive complex 2 subunit(EZH1) Homo sapiens EZH1 is a component of a noncanonical Polycomb repressive complex-2 (PRC2) that mediates methylation of histone H3 (see MIM 602812) lys27 (H3K27) and functions in the maintenance of embryonic stem cell pluripotency and plasticity (Shen et al., 2008 [PubMed 19026780]).[supplied by OMIM, Mar 2009],



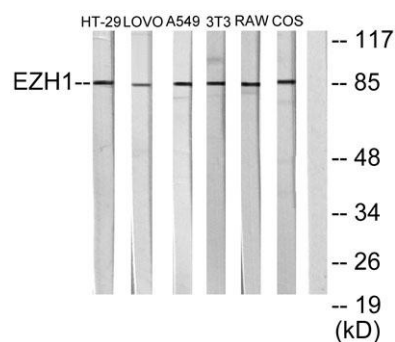
Western Blot analysis of various cells using ENX-2 Polyclonal Antibody cells nucleus extracted by Minute TM Cytoplasmic and Nuclear Fractionation kit (SC-003, Invent biotech, MN, USA).



Western Blot analysis of COS7 cells using ENX-2 Polyclonal Antibody cells nucleus extracted by Minute TM Cytoplasmic and Nuclear Fractionation kit (SC-003, Invent biotech, MN, USA).



Immunohistochemistry analysis of paraffin-embedded human lung carcinoma tissue, using EZHI1 Antibody. The picture on the right is blocked with the synthesized peptide.



Western blot analysis of lysates from HT-29, LOVO, A549, NIH/3T3, RAW264.7, and COS7 cells, using EZHI1 Antibody. The lane on the right is blocked with the synthesized peptide.