

**ELOVL6 rabbit pAb****Cat#: orb765131 (Manual)**

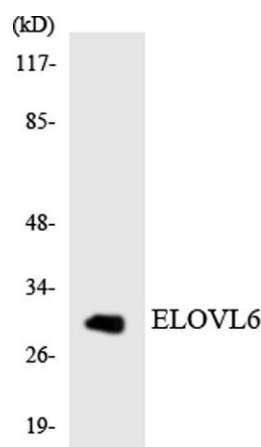
For research use only. Not intended for diagnostic use.

<b>Product Name</b>	ELOVL6 rabbit pAb
<b>Host species</b>	Rabbit
<b>Applications</b>	WB;ELISA
<b>Species Cross-Reactivity</b>	Human;Mouse;Rat
<b>Recommended dilutions</b>	Western Blot: 1/500 - 1/2000. ELISA: 1/10000. Not yet tested in other applications.
<b>Immunogen</b>	The antiserum was produced against synthesized peptide derived from human ELOVL6. AA range:21-70
<b>Specificity</b>	ELOVL6 Polyclonal Antibody detects endogenous levels of ELOVL6 protein.
<b>Formulation</b>	Liquid in PBS containing 50% glycerol, 0.5% BSA and 0.02% sodium azide..
<b>Storage</b>	Store at -20°C. Avoid repeated freeze-thaw cycles.
<b>Protein Name</b>	Elongation of very long chain fatty acids protein 6
<b>Gene Name</b>	ELOVL6
<b>Cellular localization</b>	Endoplasmic reticulum membrane ; Multi-pass membrane protein .
<b>Purification</b>	The antibody was affinity-purified from rabbit antiserum by affinity-chromatography using epitope-specific immunogen.
<b>Clonality</b>	Polyclonal

<b>Concentration</b>	1 mg/ml
<b>Observed band</b>	35kD
<b>Human Gene ID</b>	79071
<b>Human Swiss-Prot Number</b>	Q9H5J4
<b>Alternative Names</b>	ELOVL6; FACE; LCE; Elongation of very long chain fatty acids protein 6; 3-keto acyl-CoA synthase ELOVL6; ELOVL fatty acid elongase 6; ELOVL FA elongase 6; Fatty acid elongase 2; hELO2; Fatty acyl-CoA elongase; Long-chain fatty-acyl elongase
<b>Background</b>	Fatty acid elongases (EC 6.2.1.3), such as ELOVL6, use malonyl-CoA as a 2-carbon donor in the first and rate-limiting step of fatty acid elongation (Moon et al., 2001 [PubMed 11567032]).[supplied by OMIM, Mar 2008],



Western Blot analysis of various cells using ELOVL6 Polyclonal Antibody



Western blot analysis of the lysates from K562 cells using ELOVL6 antibody.