

**eIF2B $\gamma$  rabbit pAb****Cat#: orb765118 (Manual)**

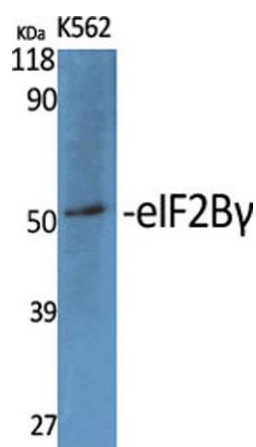
For research use only. Not intended for diagnostic use.

<b>Product Name</b>	eIF2B $\gamma$ rabbit pAb
<b>Host species</b>	Rabbit
<b>Applications</b>	WB;ELISA
<b>Species Cross-Reactivity</b>	Human;Mouse
<b>Recommended dilutions</b>	Western Blot: 1/500 - 1/2000. ELISA: 1/5000. Not yet tested in other applications.
<b>Immunogen</b>	Synthesized peptide derived from eIF2B $\gamma$ . at AA range: 240-320
<b>Specificity</b>	eIF2B $\gamma$ Polyclonal Antibody detects endogenous levels of eIF2B $\gamma$ protein.
<b>Formulation</b>	Liquid in PBS containing 50% glycerol, 0.5% BSA and 0.02% sodium azide..
<b>Storage</b>	Store at -20°C. Avoid repeated freeze-thaw cycles.
<b>Protein Name</b>	Translation initiation factor eIF-2B subunit gamma
<b>Gene Name</b>	EIF2B3
<b>Cellular localization</b>	cytoplasm,cytosol,eukaryotic translation initiation factor 2B complex,
<b>Purification</b>	The antibody was affinity-purified from rabbit antiserum by affinity-chromatography using epitope-specific immunogen.
<b>Clonality</b>	Polyclonal

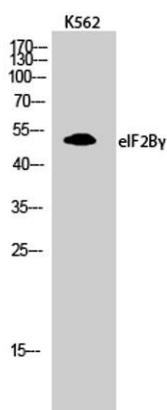
<b>Concentration</b>	1 mg/ml
<b>Observed band</b>	50kD
<b>Human Gene ID</b>	8891
<b>Human Swiss-Prot Number</b>	Q9NR50
<b>Alternative Names</b>	EIF2B3; Translation initiation factor eIF-2B subunit gamma; eIF-2B GDP-GTP exchange factor subunit gamma

### Background

The protein encoded by this gene is one of the subunits of initiation factor eIF2B, which catalyzes the exchange of eukaryotic initiation factor 2-bound GDP for GTP. It has also been found to function as a cofactor of hepatitis C virus internal ribosome entry site-mediated translation. Mutations in this gene have been associated with leukodystrophy with vanishing white matter. Alternatively spliced transcript variants encoding different isoforms have been found for this gene. [provided by RefSeq, Oct 2009],



Western Blot analysis of various cells using eIF2B $\gamma$  Polyclonal Antibody diluted at 1:1000



Western Blot analysis of K562 cells using eIF2B $\gamma$  Polyclonal Antibody diluted at 1:1000



Explore. Bioreagents.

[www.biorbyt.com](http://www.biorbyt.com)