

## Egr-2 rabbit pAb

**Cat#: orb765116 (Manual)**

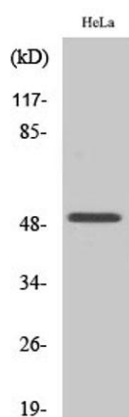
For research use only. Not intended for diagnostic use.

<b>Product Name</b>	Egr-2 rabbit pAb
<b>Host species</b>	Rabbit
<b>Applications</b>	WB;IHC;IF;ELISA
<b>Species Cross-Reactivity</b>	Human;Mouse;Rat
<b>Recommended dilutions</b>	Western Blot: 1/500 - 1/2000. Immunohistochemistry: 1/100 - 1/300. Immunofluorescence: 1/200 - 1/1000. ELISA: 1/20000. Not yet tested in other applications.
<b>Immunogen</b>	The antiserum was produced against synthesized peptide derived from human EGR1/2. AA range:371-420
<b>Specificity</b>	Egr-2 Polyclonal Antibody detects endogenous levels of Egr-2 protein.
<b>Formulation</b>	Liquid in PBS containing 50% glycerol, 0.5% BSA and 0.02% sodium azide..
<b>Storage</b>	Store at -20°C. Avoid repeated freeze-thaw cycles.
<b>Protein Name</b>	Early growth response protein 2
<b>Gene Name</b>	EGR2
<b>Cellular localization</b>	Nucleus . Cytoplasm .
<b>Purification</b>	The antibody was affinity-purified from rabbit antiserum by affinity-chromatography using epitope-specific immunogen.
<b>Clonality</b>	Polyclonal

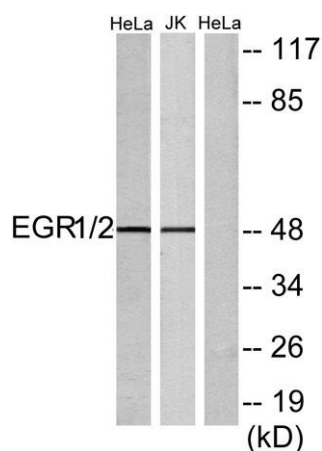
<b>Concentration</b>	1 mg/ml
<b>Observed band</b>	50kD
<b>Human Gene ID</b>	1958/1959
<b>Human Swiss-Prot Number</b>	P18146/P11161
<b>Alternative Names</b>	EGR1; KROX24; ZNF225; Early growth response protein 1; EGR-1; AT225; Nerve growth factor-induced protein A; NGFI-A; Transcription factor ETR103; Transcription factor Zif268; Zinc finger protein 225; Zinc finger protein Krox-24; EGR2; KROX20

**Background**

The protein encoded by this gene belongs to the EGR family of C2H2-type zinc-finger proteins. It is a nuclear protein and functions as a transcriptional regulator. The products of target genes it activates are required for differentiation and mitogenesis. Studies suggest this is a cancer suppressor gene. [provided by RefSeq, Dec 2014],



**Western Blot analysis of various cells using Egr-2 Polyclonal Antibody cells nucleus extracted by Minute TM Cytoplasmic and Nuclear Fractionation kit (SC-003, Invent biotech, MN, USA).**



**Western blot analysis of lysates from HeLa and Jurkat cells, using EGR1/2 Antibody. The lane on the right is blocked with the synthesized peptide.**



**Immunohistochemical analysis of paraffin-embedded human tonsil. 1, Tris-EDTA, pH 9.0 was used for antigen retrieval. 2 Antibody was diluted at 1:200 (4° overnight). 3, Secondary antibody was diluted at 1:200 (room temperature, 45 min).**