

EGFL5 rabbit pAb**Cat#: orb765108 (Manual)**

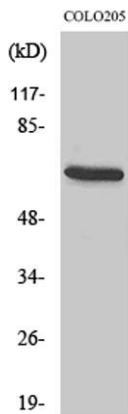
For research use only. Not intended for diagnostic use.

Product Name	EGFL5 rabbit pAb
Host species	Rabbit
Applications	WB;ELISA
Species Cross-Reactivity	Human;Mouse;Rat
Recommended dilutions	Western Blot: 1/500 - 1/2000. ELISA: 1/40000. Not yet tested in other applications.
Immunogen	The antiserum was produced against synthesized peptide derived from human MEGF9. AA range:383-432
Specificity	EGFL5 Polyclonal Antibody detects endogenous levels of EGFL5 protein.
Formulation	Liquid in PBS containing 50% glycerol, 0.5% BSA and 0.02% sodium azide..
Storage	Store at -20°C. Avoid repeated freeze-thaw cycles.
Protein Name	Multiple epidermal growth factor-like domains protein 9
Gene Name	MEGF9
Cellular localization	Membrane ; Single-pass type I membrane protein .
Purification	The antibody was affinity-purified from rabbit antiserum by affinity-chromatography using epitope-specific immunogen.
Clonality	Polyclonal

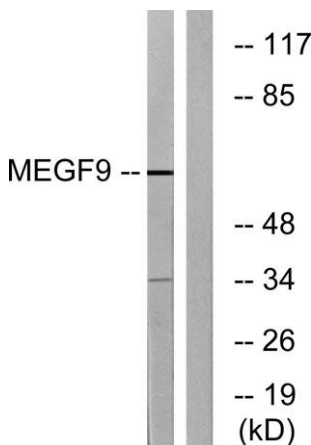
Concentration	1 mg/ml
Observed band	63kD
Human Gene ID	1955
Human Swiss-Prot Number	Q9H1U4
Alternative Names	MEGF9; EGFL5; KIAA0818; Multiple epidermal growth factor-like domains protein 9; Multiple EGF-like domains protein 9; Epidermal growth factor-like protein 5; EGF-like protein 5

Background

caution:It is uncertain whether Met-1 or Met-9 is the initiator.,polymorphism:The poly-Ala stretch (positions 24 to 31) may be polymorphic and varies from 6 to 8 Ala residues.,sequence caution:Intron retention.,similarity:Contains 5 laminin EGF-like domains.,



Western Blot analysis of various cells using EGFL5 Polyclonal Antibody diluted at 1:500



Western blot analysis of lysates from COLO cells, using MEGF9 Antibody. The lane on the right is blocked with the synthesized peptide.