

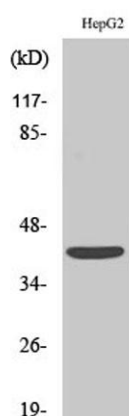
EDG-6 rabbit pAb**Cat#: orb765100 (Manual)**

For research use only. Not intended for diagnostic use.

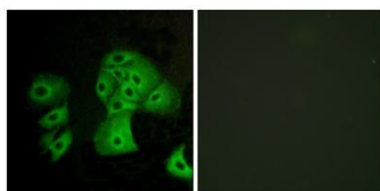
Product Name	EDG-6 rabbit pAb
Host species	Rabbit
Applications	WB;IF;ELISA
Species Cross-Reactivity	Human;Rat;Mouse;
Recommended dilutions	Western Blot: 1/500 - 1/2000. Immunofluorescence: 1/200 - 1/1000. ELISA: 1/5000. Not yet tested in other applications.
Immunogen	The antiserum was produced against synthesized peptide derived from human EDG6. AA range:211-260
Specificity	EDG-6 Polyclonal Antibody detects endogenous levels of EDG-6 protein.
Formulation	Liquid in PBS containing 50% glycerol, 0.5% BSA and 0.02% sodium azide..
Storage	Store at -20°C. Avoid repeated freeze-thaw cycles.
Protein Name	Sphingosine 1-phosphate receptor 4
Gene Name	S1PR4
Cellular localization	Cell membrane; Multi-pass membrane protein.
Purification	The antibody was affinity-purified from rabbit antiserum by affinity-chromatography using epitope-specific immunogen.
Clonality	Polyclonal

Concentration	1 mg/ml
Observed band	41kD
Human Gene ID	8698
Human Swiss-Prot Number	O95977
Alternative Names	S1PR4; EDG6; Sphingosine 1-phosphate receptor 4; S1P receptor 4; S1P4; Endothelial differentiation G-protein coupled receptor 6; Sphingosine 1-phosphate receptor Edg-6; S1P receptor Edg-6

Background This gene is a member of the endothelial differentiation, G-protein-coupled (EDG)) receptor gene family. EDG receptors bind lysophospholipids or lysosphingolipids as ligands, and are involved in cell signalling in many different cell types. This EDG receptor gene is intronless and is specifically expressed in the lymphoid tissue. [provided by RefSeq, Jul 2008],



Western Blot analysis of various cells using EDG-6 Polyclonal Antibody



Immunofluorescence analysis of A549 cells, using EDG6 Antibody. The picture on the right is blocked with the synthesized peptide.