

DREG rabbit pAb

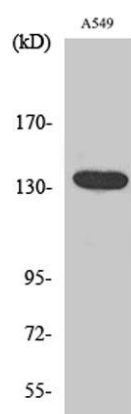
Cat#: orb765076 (Manual)

For research use only. Not intended for diagnostic use.

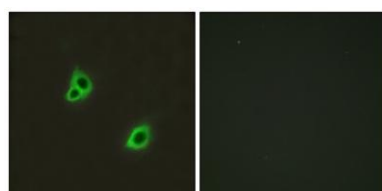
Product Name	DREG rabbit pAb
Host species	Rabbit
Applications	WB;IF;ELISA
Species Cross-Reactivity	Human;Mouse
Recommended dilutions	Western Blot: 1/500 - 1/2000. Immunofluorescence: 1/200 - 1/1000. ELISA: 1/20000. Not yet tested in other applications.
Immunogen	The antiserum was produced against synthesized peptide derived from human GPR126. AA range:1091-1140
Specificity	DREG Polyclonal Antibody detects endogenous levels of DREG protein.
Formulation	Liquid in PBS containing 50% glycerol, 0.5% BSA and 0.02% sodium azide..
Storage	Store at -20°C. Avoid repeated freeze-thaw cycles.
Protein Name	G-protein coupled receptor 126
Gene Name	GPR126
Cellular localization	Cell membrane ; Multi-pass membrane protein . Detected on the cell surface of activated but not resting umbilical vein. .
Purification	The antibody was affinity-purified from rabbit antiserum by affinity-chromatography using epitope-specific immunogen.
Clonality	Polyclonal

Concentration	1 mg/ml
Observed band	140kD
Human Gene ID	57211
Human Swiss-Prot Number	Q86SQ4
Alternative Names	GPR126; DREG; VIGR; G-protein coupled receptor 126; Developmentally regulated G-protein-coupled receptor; Vascular inducible G protein-coupled receptor

Background This gene, which is upregulated in human umbilical vein endothelial cells, encodes a G protein-coupled receptor. Variations in this gene can affect a person's stature. Multiple transcript variants encoding different proteins have been found for this gene. [provided by RefSeq, Mar 2009],



Western Blot analysis of various cells using DREG Polyclonal Antibody



Immunofluorescence analysis of HUVEC cells, using GPR126 Antibody. The picture on the right is blocked with the synthesized peptide.