

DR4 rabbit pAb**Cat#: orb765073 (Manual)**

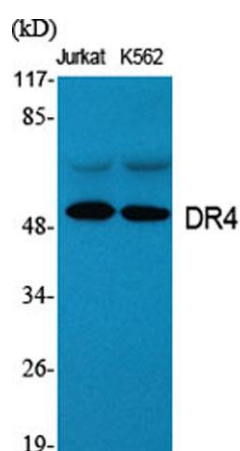
For research use only. Not intended for diagnostic use.

Product Name	DR4 rabbit pAb
Host species	Rabbit
Applications	WB;IF;ELISA
Species Cross-Reactivity	Human;Monkey
Recommended dilutions	Western Blot: 1/500 - 1/2000. Immunofluorescence: 1/200 - 1/1000. ELISA: 1/5000. Not yet tested in other applications.
Immunogen	The antiserum was produced against synthesized peptide derived from human TNFRSF10A. AA range:401-450
Specificity	DR4 Polyclonal Antibody detects endogenous levels of DR4 protein.
Formulation	Liquid in PBS containing 50% glycerol, 0.5% BSA and 0.02% sodium azide..
Storage	Store at -20°C. Avoid repeated freeze-thaw cycles.
Protein Name	Tumor necrosis factor receptor superfamily member 10A
Gene Name	TNFRSF10A
Cellular localization	Cell membrane ; Single-pass type I membrane protein . Membrane raft . Cytoplasm, cytosol . Palmitoylation is required for association with membranes. .
Purification	The antibody was affinity-purified from rabbit antiserum by affinity-chromatography using epitope-specific immunogen.

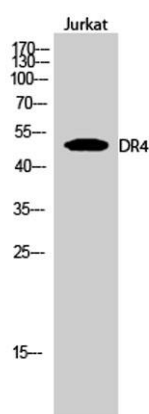
Clonality	Polyclonal
Concentration	1 mg/ml
Observed band	50kD
Human Gene ID	8797
Human Swiss-Prot Number	O00220
Alternative Names	TNFRSF10A; APO2; DR4; TRAILR1; Tumor necrosis factor receptor superfamily member 10A; Death receptor 4; TNF-related apoptosis-inducing ligand receptor 1; TRAIL receptor 1; TRAIL-R1; CD antigen CD261

Background

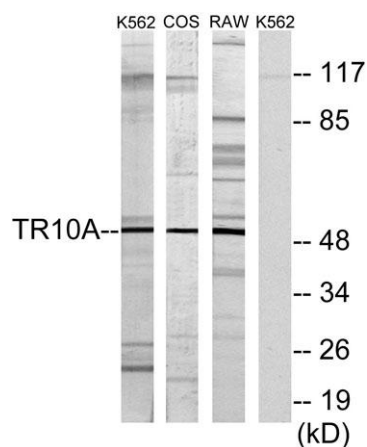
The protein encoded by this gene is a member of the TNF-receptor superfamily. This receptor is activated by tumor necrosis factor-related apoptosis inducing ligand (TNFSF10/TRAIL), and thus transduces cell death signal and induces cell apoptosis. Studies with FADD-deficient mice suggested that FADD, a death domain containing adaptor protein, is required for the apoptosis mediated by this protein. [provided by RefSeq, Jul 2008],



Western Blot analysis of various cells using DR4 Polyclonal Antibody



Western Blot analysis of Jurkat cells using DR4 Polyclonal Antibody



Western blot analysis of lysates from K562 cells, COS7 cells, and RAW264.7 cells, using TR10A Antibody . The lane on the right is blocked with the synthesized peptide.