

DP-2 rabbit pAb**Cat#: orb765070 (Manual)**

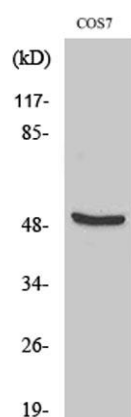
For research use only. Not intended for diagnostic use.

Product Name	DP-2 rabbit pAb
Host species	Rabbit
Applications	WB;ELISA
Species Cross-Reactivity	Human;Mouse;Rat;Monkey
Recommended dilutions	Western Blot: 1/500 - 1/2000. ELISA: 1/10000. Not yet tested in other applications.
Immunogen	The antiserum was produced against synthesized peptide derived from human DP-2. AA range:64-113
Specificity	DP-2 Polyclonal Antibody detects endogenous levels of DP-2 protein.
Formulation	Liquid in PBS containing 50% glycerol, 0.5% BSA and 0.02% sodium azide..
Storage	Store at -20°C. Avoid repeated freeze-thaw cycles.
Protein Name	Transcription factor Dp-2
Gene Name	TFDP2
Cellular localization	Nucleus.
Purification	The antibody was affinity-purified from rabbit antiserum by affinity-chromatography using epitope-specific immunogen.
Clonality	Polyclonal

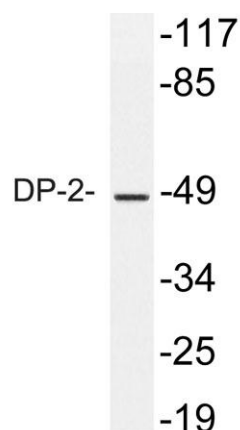
Concentration	1 mg/ml
Observed band	49kD
Human Gene ID	7029
Human Swiss-Prot Number	Q14188
Alternative Names	TFDP2; DP2; Transcription factor Dp-2; E2F dimerization partner 2

Background

The gene is a member of the transcription factor DP family. The encoded protein forms heterodimers with the E2F transcription factors resulting in transcriptional activation of cell cycle regulated genes. Alternative splicing results in multiple transcript variants. [provided by RefSeq, May 2010],



Western Blot analysis of various cells using DP-2 Polyclonal Antibody cells nucleus extracted by Minute TM Cytoplasmic and Nuclear Fractionation kit (SC-003, Invent biotech, MN, USA).



Western blot analysis of lysate from COS7 cells, using DP-2 antibody.