

DNA pol λ rabbit pAb**Cat#: orb765061 (Manual)**

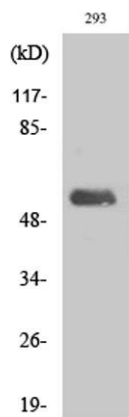
For research use only. Not intended for diagnostic use.

Product Name	DNA pol λ rabbit pAb
Host species	Rabbit
Applications	WB;IHC;IF;ELISA
Species Cross-Reactivity	Human;Mouse;Rat
Recommended dilutions	Western Blot: 1/500 - 1/2000. Immunohistochemistry: 1/100 - 1/300. ELISA: 1/10000. Not yet tested in other applications.
Immunogen	The antiserum was produced against synthesized peptide derived from human DNA Polymerase lambda. AA range:451-500
Specificity	DNA pol λ Polyclonal Antibody detects endogenous levels of DNA pol λ protein.
Formulation	Liquid in PBS containing 50% glycerol, 0.5% BSA and 0.02% sodium azide..
Storage	Store at -20°C. Avoid repeated freeze-thaw cycles.
Protein Name	DNA polymerase lambda
Gene Name	POLL
Cellular localization	Nucleus . Chromosome . Accumulates at sites of DNA damage. .
Purification	The antibody was affinity-purified from rabbit antiserum by affinity-chromatography using epitope-specific immunogen.
Clonality	Polyclonal

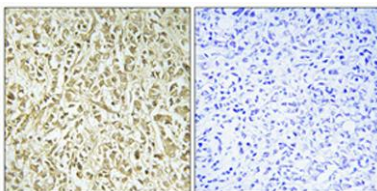
Concentration	1 mg/ml
Observed band	63kD
Human Gene ID	27343
Human Swiss-Prot Number	Q9UGP5
Alternative Names	POLL; DNA polymerase lambda; Pol Lambda; DNA polymerase beta-2; Pol beta2; DNA polymerase kappa

Background

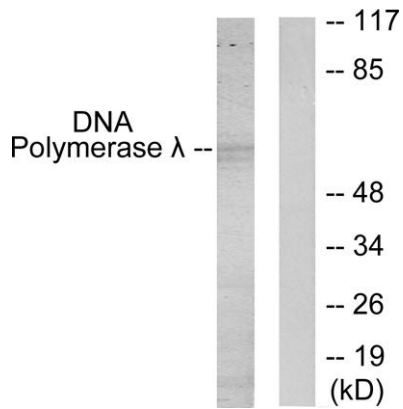
This gene encodes a DNA polymerase. DNA polymerases catalyze DNA-template-directed extension of the 3'-end of a DNA strand. This particular polymerase, which is a member of the X family of DNA polymerases, likely plays a role in non-homologous end joining and other DNA repair processes. Alternatively spliced transcript variants have been described. [provided by RefSeq, Mar 2010],



Western Blot analysis of various cells using DNA pol λ Polyclonal Antibody cells nucleus extracted by Minute TM Cytoplasmic and Nuclear Fractionation kit (SC-003, Invent biotech, MN, USA).



Immunohistochemical analysis of paraffin-embedded Human breast cancer. Antibody was diluted at 1:100(4° overnight). High-pressure and temperature Tris-EDTA, pH8.0 was used for antigen retrieval. Negative control (right) obtained from antibody was pre-absor



Western blot analysis of lysates from 293 cells, using DNA Polymerase lambda Antibody. The lane on the right is blocked with the synthesized peptide.