

DNA pol α rabbit pAb**Cat#: orb765059 (Manual)**

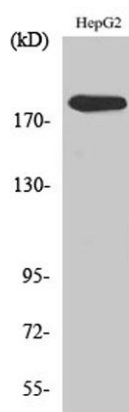
For research use only. Not intended for diagnostic use.

Product Name	DNA pol α rabbit pAb
Host species	Rabbit
Applications	WB;ELISA
Species Cross-Reactivity	Human;Rat;Mouse;
Recommended dilutions	Western Blot: 1/500 - 1/2000. ELISA: 1/20000. Not yet tested in other applications.
Immunogen	The antiserum was produced against synthesized peptide derived from human DNA Polymerase alpha. AA range:81-130
Specificity	DNA pol α Polyclonal Antibody detects endogenous levels of DNA pol α protein.
Formulation	Liquid in PBS containing 50% glycerol, 0.5% BSA and 0.02% sodium azide..
Storage	Store at -20°C. Avoid repeated freeze-thaw cycles.
Protein Name	DNA polymerase alpha catalytic subunit
Gene Name	POLA1
Cellular localization	Nucleus . Cytoplasm, cytosol . In the cytosol, colocalizes with RNA:DNA hybrids with a speckled pattern. .
Purification	The antibody was affinity-purified from rabbit antiserum by affinity-chromatography using epitope-specific immunogen.
Clonality	Polyclonal

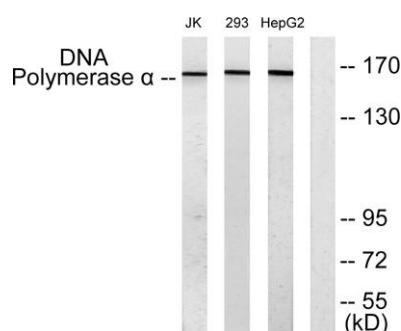
Concentration	1 mg/ml
Observed band	165kD
Human Gene ID	5422
Human Swiss-Prot Number	P09884
Alternative Names	POLA1; POLA; DNA polymerase alpha catalytic subunit; DNA polymerase alpha catalytic subunit p180

Background

This gene encodes the catalytic subunit of DNA polymerase, which together with a regulatory and two primase subunits, forms the DNA polymerase alpha complex. The catalytic subunit plays an essential role in the initiation of DNA replication. [provided by RefSeq, Mar 2010],



Western Blot analysis of various cells using DNA pol α Polyclonal Antibody diluted at 1:1000



Western blot analysis of lysates from HepG2, 293, and Jurkat cells, using DNA Polymerase alpha Antibody. The lane on the right is blocked with the synthesized peptide.