

Di-Ras1 rabbit pAb

Cat#: orb765049 (Manual)

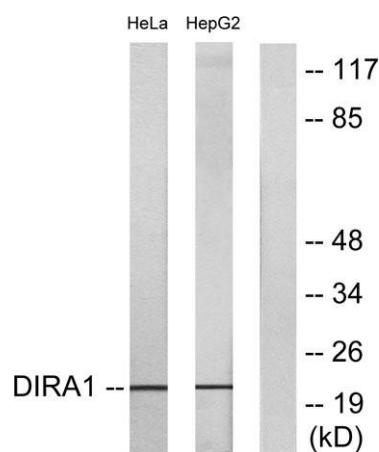
For research use only. Not intended for diagnostic use.

Product Name	Di-Ras1 rabbit pAb
Host species	Rabbit
Applications	WB;IHC;IF;ELISA
Species Cross-Reactivity	Human;Rat;Mouse;
Recommended dilutions	Western Blot: 1/500 - 1/2000. Immunohistochemistry: 1/100 - 1/300. Immunofluorescence: 1/200 - 1/1000. ELISA: 1/20000. Not yet tested in other applications.
Immunogen	The antiserum was produced against synthesized peptide derived from human DIRA1. AA range:149-198
Specificity	Di-Ras1 Polyclonal Antibody detects endogenous levels of Di-Ras1 protein.
Formulation	Liquid in PBS containing 50% glycerol, 0.5% BSA and 0.02% sodium azide..
Storage	Store at -20°C. Avoid repeated freeze-thaw cycles.
Protein Name	GTP-binding protein Di-Ras1
Gene Name	DIRAS1
Cellular localization	Cell membrane ; Lipid-anchor ; Cytoplasmic side .
Purification	The antibody was affinity-purified from rabbit antiserum by affinity-chromatography using epitope-specific immunogen.
Clonality	Polyclonal

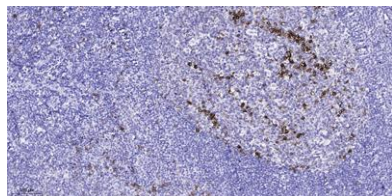
Concentration	1 mg/ml
Observed band	22kD
Human Gene ID	148252
Human Swiss-Prot Number	O95057
Alternative Names	DIRAS1; GBTS1; RIG; GTP-binding protein Di-Ras1; Distinct subgroup of the Ras family member 1; Ras-related inhibitor of cell growth; Rig; Small GTP-binding tumor suppressor 1
Background	DIRAS1 belongs to a distinct branch of the functionally diverse Ras (see HRAS; MIM 190020) superfamily of monomeric GTPases.[supplied by OMIM, Apr 2004],



Western Blot analysis of various cells using Di-Ras1 Polyclonal Antibody



Western blot analysis of lysates from HeLa and HepG2 cells, using DIRA1 Antibody. The lane on the right is blocked with the synthesized peptide.



Immunohistochemical analysis of paraffin-embedded human tonsil. 1, Antibody was diluted at 1:200(4° overnight). 2, Tris-EDTA,pH9.0 was used for antigen retrieval. 3,Secondary antibody was diluted at 1:200(room temperature, 45min).