

**DGK- $\iota$  rabbit pAb****Cat#: orb765041 (Manual)**

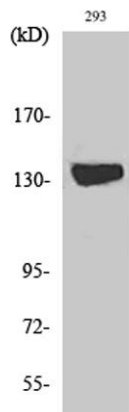
For research use only. Not intended for diagnostic use.

<b>Product Name</b>	DGK- $\iota$ rabbit pAb
<b>Host species</b>	Rabbit
<b>Applications</b>	WB;IHC;IF;ELISA
<b>Species Cross-Reactivity</b>	Human;Rat
<b>Recommended dilutions</b>	Western Blot: 1/500 - 1/2000. Immunohistochemistry: 1/100 - 1/300. Immunofluorescence: 1/200 - 1/1000. ELISA: 1/20000. Not yet tested in other applications.
<b>Immunogen</b>	The antiserum was produced against synthesized peptide derived from human DGKI. AA range:991-1040
<b>Specificity</b>	DGK- $\iota$ Polyclonal Antibody detects endogenous levels of DGK- $\iota$ protein.
<b>Formulation</b>	Liquid in PBS containing 50% glycerol, 0.5% BSA and 0.02% sodium azide..
<b>Storage</b>	Store at -20°C. Avoid repeated freeze-thaw cycles.
<b>Protein Name</b>	Diacylglycerol kinase iota
<b>Gene Name</b>	DGKI
<b>Cellular localization</b>	Cell projection, axon . Cell projection, dendrite . Cell junction, synapse, presynapse . Cell junction, synapse, postsynapse . Cell junction, synapse, postsynaptic density . Cell junction, synapse, synaptic cell membrane . Cytoplasmic vesicle, secretory vesicle, synaptic vesicle membrane . Cytoplasm, cytosol . Nucleus . Excluded from inhibitory synapses (By similarity). Localization between cytoplasm and nucleus is regulated by protein kinase C (PubMed:9830018). Both in the detergent soluble and particulate fractions (By similarity)..

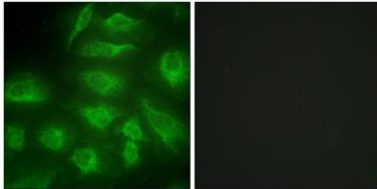
<b>Purification</b>	The antibody was affinity-purified from rabbit antiserum by affinity-chromatography using epitope-specific immunogen.
<b>Clonality</b>	Polyclonal
<b>Concentration</b>	1 mg/ml
<b>Observed band</b>	160kD
<b>Human Gene ID</b>	9162
<b>Human Swiss-Prot Number</b>	O75912
<b>Alternative Names</b>	DGKI; Diacylglycerol kinase iota; DAG kinase iota; Diglyceride kinase iota; DGK-iota

**Background**

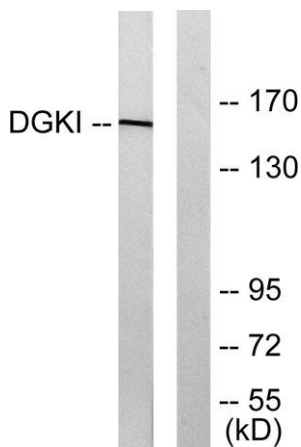
This gene is a member of the type IV diacylglycerol kinase subfamily. Diacylglycerol kinases regulate the intracellular concentration of diacylglycerol through its phosphorylation, producing phosphatidic acid. The specific role of the enzyme encoded by this gene is undetermined, however, it may play a crucial role in the production of phosphatidic acid in the retina or in recessive forms of retinal degeneration. [provided by RefSeq, Jul 2008],



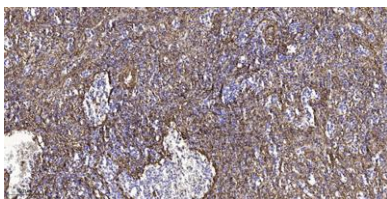
**Western Blot analysis of various cells using DGK- $\iota$  Polyclonal Antibody diluted at 1:1000**



**Immunofluorescence analysis of HeLa cells, using DGKI Antibody. The picture on the right is blocked with the synthesized peptide.**



**Western blot analysis of lysates from 293 cells, using DGKI Antibody. The lane on the right is blocked with the synthesized peptide.**



**Immunohistochemical analysis of paraffin-embedded human spleen tissue. 1,primary Antibody was diluted at 1:200(4° overnight). 2, Sodium citrate pH 6.0 was used for antigen retrieval(>98°C,20min). 3,Secondary antibody was diluted at 1:200**