

DDX55 rabbit pAb**Cat#: orb765034 (Manual)**

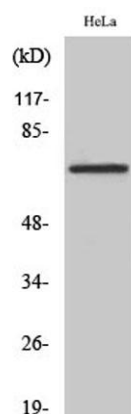
For research use only. Not intended for diagnostic use.

Product Name	DDX55 rabbit pAb
Host species	Rabbit
Applications	WB;IHC;IF;ELISA
Species Cross-Reactivity	Human;Mouse
Recommended dilutions	Western Blot: 1/500 - 1/2000. Immunohistochemistry: 1/100 - 1/300. ELISA: 1/40000. Not yet tested in other applications.
Immunogen	The antiserum was produced against synthesized peptide derived from human DDX55. AA range:91-140
Specificity	DDX55 Polyclonal Antibody detects endogenous levels of DDX55 protein.
Formulation	Liquid in PBS containing 50% glycerol, 0.5% BSA and 0.02% sodium azide..
Storage	Store at -20°C. Avoid repeated freeze-thaw cycles.
Protein Name	ATP-dependent RNA helicase DDX55
Gene Name	DDX55
Cellular localization	membrane,
Purification	The antibody was affinity-purified from rabbit antiserum by affinity-chromatography using epitope-specific immunogen.
Clonality	Polyclonal

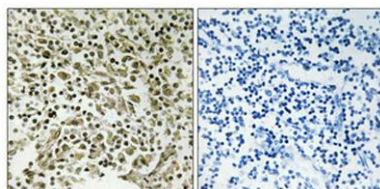
Concentration	1 mg/ml
Observed band	68kD
Human Gene ID	57696
Human Swiss-Prot Number	Q8NHQ9
Alternative Names	DDX55; KIAA1595; ATP-dependent RNA helicase DDX55; DEAD box protein 55

Background

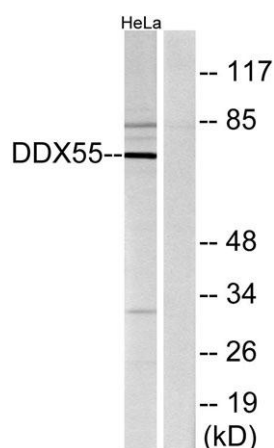
This gene encodes a member of protein family containing a characteristic Asp-Glu-Ala-Asp (DEAD) motif. These proteins are putative RNA helicases, and may be involved in a range of nuclear processes including translational initiation, nuclear and mitochondrial splicing, and ribosome and spliceosome assembly. Multiple alternatively spliced transcript variants have been found for this gene. Pseudogenes have been identified on chromosomes 1 and 12. [provided by RefSeq, Feb 2016],



Western Blot analysis of various cells using DDX55 Polyclonal Antibody diluted at 1:500



Immunohistochemical analysis of paraffin-embedded Human lung cancer. Antibody was diluted at 1:100(4° overnight). High-pressure and temperature Tris-EDTA,pH8.0 was used for antigen retrieval. Negative contrl (right) obtained from antibody was pre-absorbe



Western blot analysis of lysates from HeLa cells, using DDX55 Antibody. The lane on the right is blocked with the synthesized peptide.