

DAN rabbit pAb**Cat#: orb765016 (Manual)**

For research use only. Not intended for diagnostic use.

Product Name	DAN rabbit pAb
Host species	Rabbit
Applications	WB;IHC;IF;ELISA
Species Cross-Reactivity	Human;Rat;Mouse;
Recommended dilutions	Western Blot: 1/500 - 1/2000. Immunohistochemistry: 1/100 - 1/300. Immunofluorescence: 1/200 - 1/1000. ELISA: 1/20000. Not yet tested in other applications.
Immunogen	The antiserum was produced against synthesized peptide derived from human NBL1. AA range:131-180
Specificity	DAN Polyclonal Antibody detects endogenous levels of DAN protein.
Formulation	Liquid in PBS containing 50% glycerol, 0.5% BSA and 0.02% sodium azide..
Storage	Store at -20°C. Avoid repeated freeze-thaw cycles.
Protein Name	Neuroblastoma suppressor of tumorigenicity 1
Gene Name	NBL1
Cellular localization	Secreted.
Purification	The antibody was affinity-purified from rabbit antiserum by affinity-chromatography using epitope-specific immunogen.
Clonality	Polyclonal

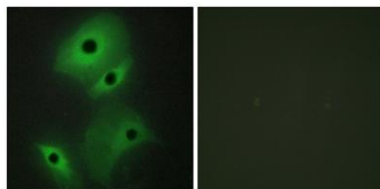
Concentration	1 mg/ml
Observed band	19kD
Human Gene ID	4681
Human Swiss-Prot Number	P41271
Alternative Names	NBL1; DAN; DAND1; Neuroblastoma suppressor of tumorigenicity 1; DAN domain family member 1; Protein N03; Zinc finger protein DAN

Background

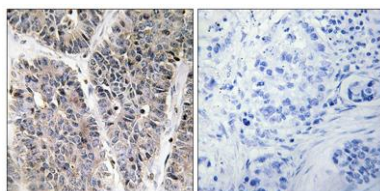
This gene product is the founding member of the evolutionarily conserved CAN (Cerberus and DAN) family of proteins, which contain a domain resembling the CTCK (C-terminal cystine knot-like) motif found in a number of signaling molecules. These proteins are secreted, and act as BMP (bone morphogenetic protein) antagonists by binding to BMPs and preventing them from interacting with their receptors. They may thus play an important role during growth and development. Alternatively spliced transcript variants have been identified for this gene. Read-through transcripts between this locus and the upstream mitochondrial inner membrane organizing system 1 gene (GeneID 440574) have been observed. [provided by RefSeq, May 2013],



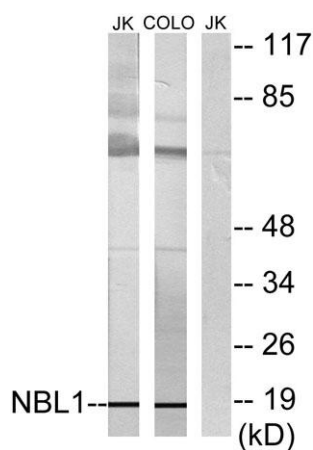
Western Blot analysis of various cells using DAN Polyclonal Antibody diluted at 1:500



Immunofluorescence analysis of HeLa cells, using NBL1 Antibody. The picture on the right is blocked with the synthesized peptide.



Immunohistochemistry analysis of paraffin-embedded human lung carcinoma tissue, using NBL1 Antibody. The picture on the right is blocked with the synthesized peptide.



Western blot analysis of lysates from Jurkat and COLO cells, using NBL1 Antibody. The lane on the right is blocked with the synthesized peptide.