

**Cytokeratin 7 rabbit pAb****Cat#: orb765009 (Manual)**

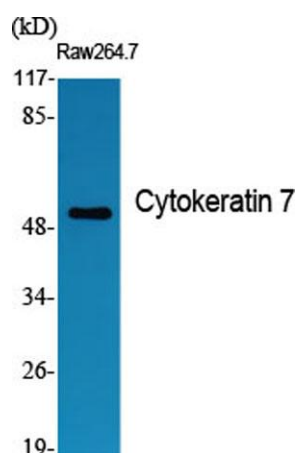
For research use only. Not intended for diagnostic use.

<b>Product Name</b>	Cytokeratin 7 rabbit pAb
<b>Host species</b>	Rabbit
<b>Applications</b>	WB;IHC;IF;ELISA
<b>Species Cross-Reactivity</b>	Human;Rat;Mouse;
<b>Recommended dilutions</b>	Western Blot: 1/500 - 1/2000. Immunohistochemistry: 1/100 - 1/300. Immunofluorescence: 1/200 - 1/1000. ELISA: 1/40000. Not yet tested in other applications.
<b>Immunogen</b>	The antiserum was produced against synthesized peptide derived from human Keratin 7. AA range:420-469
<b>Specificity</b>	Cytokeratin 7 Polyclonal Antibody detects endogenous levels of Cytokeratin 7 protein.
<b>Formulation</b>	Liquid in PBS containing 50% glycerol, 0.5% BSA and 0.02% sodium azide..
<b>Storage</b>	Store at -20°C. Avoid repeated freeze-thaw cycles.
<b>Protein Name</b>	Keratin type II cytoskeletal 7
<b>Gene Name</b>	KRT7
<b>Cellular localization</b>	Cytoplasm .
<b>Purification</b>	The antibody was affinity-purified from rabbit antiserum by affinity-chromatography using epitope-specific immunogen.
<b>Clonality</b>	Polyclonal

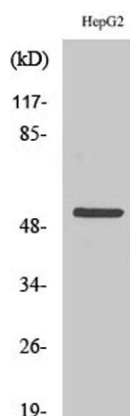
<b>Concentration</b>	1 mg/ml
<b>Observed band</b>	51kD
<b>Human Gene ID</b>	3855
<b>Human Swiss-Prot Number</b>	P08729
<b>Alternative Names</b>	KRT7; SCL; Keratin; type II cytoskeletal 7; Cytokeratin-7; CK-7; Keratin-7; K7; Sarcolectin; Type-II keratin Kb7

### Background

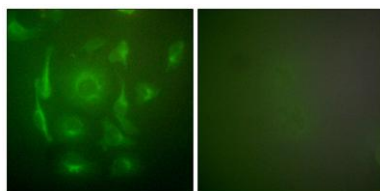
keratin 7(KRT7) Homo sapiens The protein encoded by this gene is a member of the keratin gene family. The type II cytokeratins consist of basic or neutral proteins which are arranged in pairs of heterotypic keratin chains coexpressed during differentiation of simple and stratified epithelial tissues. This type II cytokeratin is specifically expressed in the simple epithelia lining the cavities of the internal organs and in the gland ducts and blood vessels. The genes encoding the type II cytokeratins are clustered in a region of chromosome 12q12-q13. Alternative splicing may result in several transcript variants; however, not all variants have been fully described. [provided by RefSeq, Jul 2008],



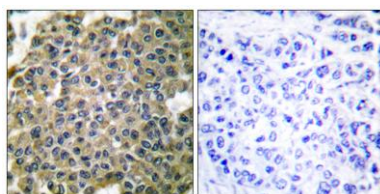
Western Blot analysis of various cells using Cytokeratin 7 Polyclonal Antibody diluted at 1:1000



**Western Blot analysis of HepG2 cells using Cytokeratin 7 Polyclonal Antibody diluted at 1:1000**



**Immunofluorescence analysis of HepG2 cells, using Keratin 7 Antibody. The picture on the right is blocked with the synthesized peptide.**



**Immunohistochemistry analysis of paraffin-embedded human breast carcinoma tissue, using Keratin 7 Antibody. The picture on the right is blocked with the synthesized peptide.**