

CysLTR2 rabbit pAb

Cat#: orb764991 (Manual)

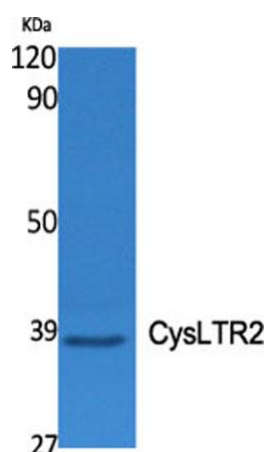
For research use only. Not intended for diagnostic use.

Product Name	CysLTR2 rabbit pAb
Host species	Rabbit
Applications	WB;IF;ELISA
Species Cross-Reactivity	Human;Rat;Mouse;
Recommended dilutions	Western Blot: 1/500 - 1/2000. Immunofluorescence: 1/200 - 1/1000. ELISA: 1/40000. Not yet tested in other applications.
Immunogen	The antiserum was produced against synthesized peptide derived from human CLTR2. AA range:281-330
Specificity	CysLTR2 Polyclonal Antibody detects endogenous levels of CysLTR2 protein.
Formulation	Liquid in PBS containing 50% glycerol, 0.5% BSA and 0.02% sodium azide..
Storage	Store at -20°C. Avoid repeated freeze-thaw cycles.
Protein Name	Cysteinyl leukotriene receptor 2
Gene Name	CYSLTR2
Cellular localization	Cell membrane; Multi-pass membrane protein.
Purification	The antibody was affinity-purified from rabbit antiserum by affinity-chromatography using epitope-specific immunogen.
Clonality	Polyclonal

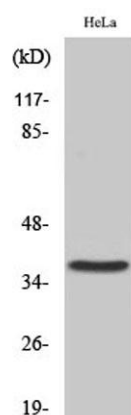
Concentration	1 mg/ml
Observed band	35kD
Human Gene ID	57105
Human Swiss-Prot Number	Q9NS75
Alternative Names	CYSLTR2; CYSLT2; CYSLT2R; PSEC0146; Cysteinyl leukotriene receptor 2; CysLTR2; G-protein coupled receptor GPCR21; hGPCR21; G-protein coupled receptor HG57; HPN321

Background

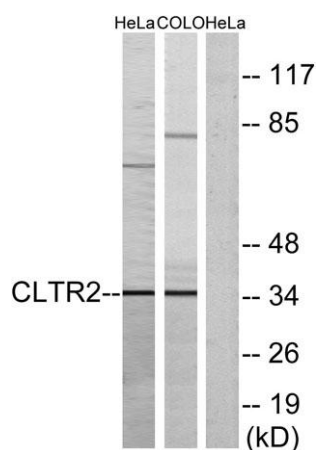
The cysteinyl leukotrienes LTC₄, LTD₄, and LTE₄ are important mediators of human bronchial asthma. Pharmacologic studies have determined that cysteinyl leukotrienes activate at least 2 receptors, the protein encoded by this gene and CYSLTR1. This encoded receptor is a member of the superfamily of G protein-coupled receptors. It seems to play a major role in endocrine and cardiovascular systems. [provided by RefSeq, Jul 2008],



Western Blot analysis of various cells using CysLTR2 Polyclonal Antibody



Western Blot analysis of HeLa cells using CysLTR2 Polyclonal Antibody



Western blot analysis of lysates from HeLa and COLO cells, using CLTR2 Antibody. The lane on the right is blocked with the synthesized peptide.