

CYP4X1 rabbit pAb**Cat#: orb764987 (Manual)**

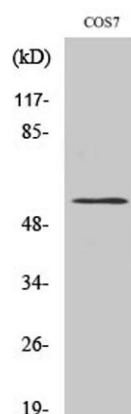
For research use only. Not intended for diagnostic use.

Product Name	CYP4X1 rabbit pAb
Host species	Rabbit
Applications	WB;IHC;IF;ELISA
Species Cross-Reactivity	Human;Monkey
Recommended dilutions	Western Blot: 1/500 - 1/2000. Immunohistochemistry: 1/100 - 1/300. ELISA: 1/40000. Not yet tested in other applications.
Immunogen	The antiserum was produced against synthesized peptide derived from human Cytochrome P450 4X1. AA range:251-300
Specificity	CYP4X1 Polyclonal Antibody detects endogenous levels of CYP4X1 protein.
Formulation	Liquid in PBS containing 50% glycerol, 0.5% BSA and 0.02% sodium azide..
Storage	Store at -20°C. Avoid repeated freeze-thaw cycles.
Protein Name	Cytochrome P450 4X1
Gene Name	CYP4X1
Cellular localization	Endoplasmic reticulum membrane ; Single-pass membrane protein . Microsome membrane ; Single-pass membrane protein .
Purification	The antibody was affinity-purified from rabbit antiserum by affinity-chromatography using epitope-specific immunogen.
Clonality	Polyclonal

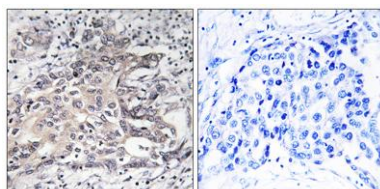
Concentration	1 mg/ml
Observed band	50kD
Human Gene ID	260293
Human Swiss-Prot Number	Q8N118
Alternative Names	CYP4X1; Cytochrome P450 4X1; CYP4X1

Background

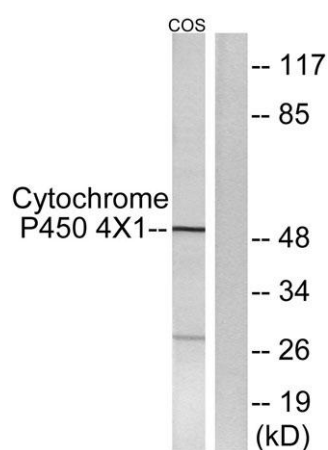
This gene encodes a member of the cytochrome P450 superfamily of enzymes and is located within a cluster of genes belonging to this superfamily on chromosome 1. The cytochrome P450 proteins are monooxygenases which catalyze many reactions involved in drug metabolism and synthesis of cholesterol, steroids and other lipids. The expression pattern of a similar rat protein suggests that this protein may be involved in neurovascular function in the brain. Alternative splicing results in multiple transcript variants. [provided by RefSeq, Feb 2016],



Western Blot analysis of various cells using CYP4X1 Polyclonal Antibody



Immunohistochemistry analysis of paraffin-embedded human liver carcinoma tissue, using Cytochrome P450 4X1 Antibody. The picture on the right is blocked with the synthesized peptide.



Western blot analysis of lysates from COS7 cells, using Cytochrome P450 4X1 Antibody. The lane on the right is blocked with the synthesized peptide.