

**CYP2U1 rabbit pAb****Cat#: orb764981 (Manual)**

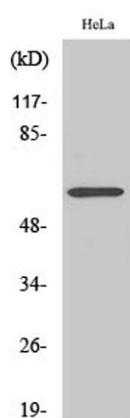
For research use only. Not intended for diagnostic use.

|                                 |  |
|---------------------------------|--|
| <b>Product Name</b>             | CYP2U1 rabbit pAb  |
| <b>Host species</b>             | Rabbit   |
| <b>Applications</b>             | WB;IHC;IF;ELISA  |
| <b>Species Cross-Reactivity</b> | Human;Mouse;Rat  |
| <b>Recommended dilutions</b>    | Western Blot: 1/500 - 1/2000. Immunohistochemistry: 1/100 - 1/300. Immunofluorescence: 1/200 - 1/1000. ELISA: 1/20000. Not yet tested in other applications.                   |
| <b>Immunogen</b>                | The antiserum was produced against synthesized peptide derived from human Cytochrome P450 2U1. AA range:281-330  |
| <b>Specificity</b>              | CYP2U1 Polyclonal Antibody detects endogenous levels of CYP2U1 protein.  |
| <b>Formulation</b>              | Liquid in PBS containing 50% glycerol, 0.5% BSA and 0.02% sodium azide..   |
| <b>Storage</b>                  | Store at -20°C. Avoid repeated freeze-thaw cycles.   |
| <b>Protein Name</b>             | Cytochrome P450 2U1  |
| <b>Gene Name</b>                | CYP2U1   |
| <b>Cellular localization</b>    | Endoplasmic reticulum membrane ; Multi-pass membrane protein . Microsome membrane ; Multi-pass membrane protein . Mitochondrion inner membrane ; Multi-pass membrane protein . |
| <b>Purification</b>             | The antibody was affinity-purified from rabbit antiserum by affinity-chromatography using epitope-specific immunogen.  |

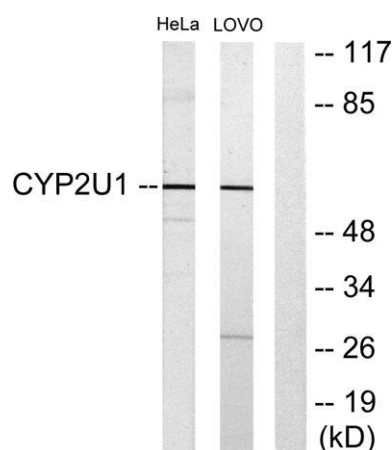
|                                |                             |
|--------------------------------|-----------------------------|
| <b>Clonality</b>               | Polyclonal                  |
| <b>Concentration</b>           | 1 mg/ml                     |
| <b>Observed band</b>           | 61kD                        |
| <b>Human Gene ID</b>           | 113612                      |
| <b>Human Swiss-Prot Number</b> | Q7Z449                      |
| <b>Alternative Names</b>       | CYP2U1; Cytochrome P450 2U1 |

### Background

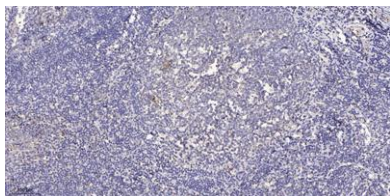
This gene encodes a member of the cytochrome P450 superfamily of enzymes. The cytochrome P450 proteins are monooxygenases which catalyze many reactions involved in drug metabolism and synthesis of cholesterol, steroids and other lipids. This enzyme is a hydroxylase that metabolizes arachidonic acid, docosahexaenoic acid, and other long chain fatty acids. [provided by RefSeq, Jul 2008],



Western Blot analysis of various cells using CYP2U1 Polyclonal Antibody



Western blot analysis of lysates from HeLa and Lovo cells, using Cytochrome P450 2U1 Antibody. The lane on the right is blocked with the synthesized peptide.



**Immunohistochemical analysis of paraffin-embedded human tonsil. 1, Antibody was diluted at 1:200(4° overnight). 2, Tris-EDTA,pH9.0 was used for antigen retrieval. 3,Secondary antibody was diluted at 1:200(room temperature, 30min).**