

CYP2C19 rabbit pAb**Cat#: orb764975 (Manual)**

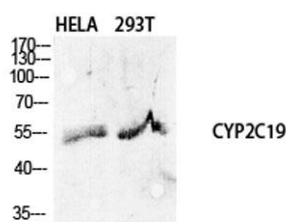
For research use only. Not intended for diagnostic use.

Product Name	CYP2C19 rabbit pAb
Host species	Rabbit
Applications	WB;IHC;IF;ELISA
Species Cross-Reactivity	Human;Rat;Mouse;
Recommended dilutions	Western Blot: 1/500 - 1/2000. Immunohistochemistry: 1/100 - 1/300. Immunofluorescence: 1/200 - 1/1000. ELISA: 1/5000. Not yet tested in other applications.
Immunogen	The antiserum was produced against synthesized peptide derived from human Cytochrome P450 2C19. AA range:241-290
Specificity	CYP2C19 Polyclonal Antibody detects endogenous levels of CYP2C19 protein.
Formulation	Liquid in PBS containing 50% glycerol, 0.5% BSA and 0.02% sodium azide..
Storage	Store at -20°C. Avoid repeated freeze-thaw cycles.
Protein Name	Cytochrome P450 2C19
Gene Name	CYP2C19
Cellular localization	Endoplasmic reticulum membrane; Peripheral membrane protein. Microsome membrane; Peripheral membrane protein.
Purification	The antibody was affinity-purified from rabbit antiserum by affinity-chromatography using epitope-specific immunogen.
Clonality	Polyclonal

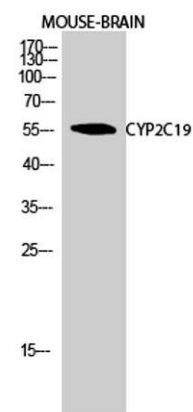
Concentration	1 mg/ml
Observed band	56kD
Human Gene ID	1557
Human Swiss-Prot Number	P33261
Alternative Names	CYP2C19; Cytochrome P450 2C19; (R)-limonene 6-monooxygenase; (S)-limonene 6-monooxygenase; (S)-limonene 7-monooxygenase; CYP11C17; CYP11C19; Cytochrome P450-11A; Cytochrome P450-254C; Mephenytoin 4-hydroxylase

Background

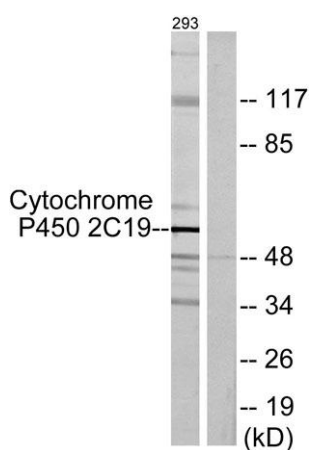
cytochrome P450 family 2 subfamily C member 19(CYP2C19) Homo sapiens This gene encodes a member of the cytochrome P450 superfamily of enzymes. The cytochrome P450 proteins are monooxygenases which catalyze many reactions involved in drug metabolism and synthesis of cholesterol, steroids and other lipids. This protein localizes to the endoplasmic reticulum and is known to metabolize many xenobiotics, including the anticonvulsive drug mephenytoin, omeprazole, diazepam and some barbiturates. Polymorphism within this gene is associated with variable ability to metabolize mephenytoin, known as the poor metabolizer and extensive metabolizer phenotypes. The gene is located within a cluster of cytochrome P450 genes on chromosome 10q24. [provided by RefSeq, Jul 2008],



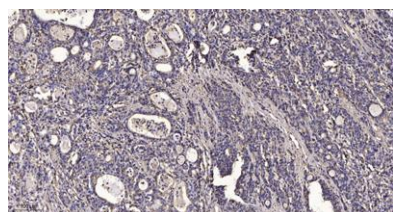
Western Blot analysis of various cells using CYP2C19 Polyclonal Antibody diluted at 1:1000



Western Blot analysis of MOUSE-BRAIN cells using CYP2C19 Polyclonal Antibody diluted at 1:1000



Western blot analysis of lysates from 293 cells, using Cytochrome P450 2C19 Antibody. The lane on the right is blocked with the synthesized peptide.



Immunohistochemical analysis of paraffin-embedded human Gastric adenocarcinoma. 1, Antibody was diluted at 1:200(4° overnight). 2, Tris-EDTA,pH9.0 was used for antigen retrieval. 3,Secondary antibody was diluted at 1:200(room temperature, 45min).