

CYP2A7 rabbit pAb**Cat#: orb764973 (Manual)**

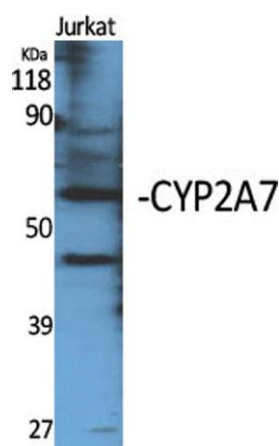
For research use only. Not intended for diagnostic use.

Product Name	CYP2A7 rabbit pAb
Host species	Rabbit
Applications	WB;IHC;IF;ELISA
Species Cross-Reactivity	Human;Rat;Mouse;
Recommended dilutions	Western Blot: 1/500 - 1/2000. Immunohistochemistry: 1/100 - 1/300. ELISA: 1/40000. Not yet tested in other applications.
Immunogen	Synthesized peptide derived from the C-terminal region of human CYP2A7.
Specificity	CYP2A7 Polyclonal Antibody detects endogenous levels of CYP2A7 protein.
Formulation	Liquid in PBS containing 50% glycerol, 0.5% BSA and 0.02% sodium azide..
Storage	Store at -20°C. Avoid repeated freeze-thaw cycles.
Protein Name	Cytochrome P450 2A7
Gene Name	CYP2A7
Cellular localization	Endoplasmic reticulum membrane; Peripheral membrane protein. Microsome membrane; Peripheral membrane protein.
Purification	The antibody was affinity-purified from rabbit antiserum by affinity-chromatography using epitope-specific immunogen.
Clonality	Polyclonal

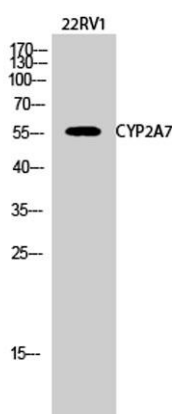
Concentration	1 mg/ml
Observed band	56kD
Human Gene ID	1549
Human Swiss-Prot Number	P20853
Alternative Names	CYP2A7; Cytochrome P450 2A7; CYP11A7; Cytochrome P450 IIA4

Background

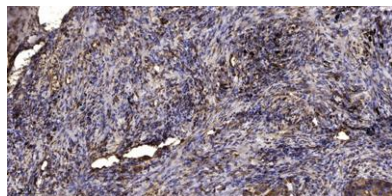
This gene encodes a member of the cytochrome P450 superfamily of enzymes. The cytochrome P450 proteins are monooxygenases which catalyze many reactions involved in drug metabolism and synthesis of cholesterol, steroids and other lipids. This protein localizes to the endoplasmic reticulum; its substrate has not yet been determined. This gene, which produces two transcript variants, is part of a large cluster of cytochrome P450 genes from the CYP2A, CYP2B and CYP2F subfamilies on chromosome 19q. [provided by RefSeq, Jul 2008],



Western Blot analysis of various cells using CYP2A7 Polyclonal Antibody diluted at 1:2000



Western Blot analysis of 22RV1 cells using CYP2A7 Polyclonal Antibody diluted at 1:2000



Immunohistochemical analysis of paraffin-embedded human Squamous cell carcinoma of lung. 1, Antibody was diluted at 1:200(4° overnight). 2, Tris-EDTA,pH9.0 was used for antigen retrieval. 3,Secondary antibody was diluted at 1:200(room temperature, 45min).