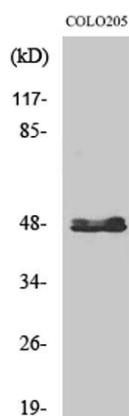


**CYP11B1/2 rabbit pAb****Cat#: orb764966 (Manual)**

For research use only. Not intended for diagnostic use.

<b>Product Name</b>	CYP11B1/2 rabbit pAb
<b>Host species</b>	Rabbit
<b>Applications</b>	WB;ELISA
<b>Species Cross-Reactivity</b>	Human
<b>Recommended dilutions</b>	Western Blot: 1/500 - 1/2000. ELISA: 1/40000. Not yet tested in other applications.
<b>Immunogen</b>	Synthesized peptide derived from the C-terminal region of human CYP11B1/2.
<b>Specificity</b>	CYP11B1/2 Polyclonal Antibody detects endogenous levels of CYP11B1/2 protein.
<b>Formulation</b>	Liquid in PBS containing 50% glycerol, 0.5% BSA and 0.02% sodium azide..
<b>Storage</b>	Store at -20°C. Avoid repeated freeze-thaw cycles.
<b>Protein Name</b>	Cytochrome P450 11B1 mitochondrial/Cytochrome P450 11B2 mitochondrial
<b>Gene Name</b>	CYP11B1/CYP11B2
<b>Cellular localization</b>	Mitochondrion inner membrane ; Peripheral membrane protein .
<b>Purification</b>	The antibody was affinity-purified from rabbit antiserum by affinity-chromatography using epitope-specific immunogen.
<b>Clonality</b>	Polyclonal

<b>Concentration</b>	1 mg/ml
<b>Observed band</b>	57kD
<b>Human Gene ID</b>	1584/1585
<b>Human Swiss-Prot Number</b>	P15538/P19099
<b>Alternative Names</b>	CYP11B1; S11BH; Cytochrome P450 11B1; mitochondrial; CYPXIB1; Cytochrome P-450c11; Cytochrome P450C11; Steroid 11-beta-hydroxylase; CYP11B2; Cytochrome P450 11B2, mitochondrial; Aldosterone synthase; ALDOS; Aldosterone-synthesizing enzyme;
<b>Background</b>	cytochrome P450 family 11 subfamily B member 1(CYP11B1) Homo sapiens This gene encodes a member of the cytochrome P450 superfamily of enzymes. The cytochrome P450 proteins are monooxygenases which catalyze many reactions involved in drug metabolism and synthesis of cholesterol, steroids and other lipids. This protein localizes to the mitochondrial inner membrane and is involved in the conversion of progesterone to cortisol in the adrenal cortex. Mutations in this gene cause congenital adrenal hyperplasia due to 11-beta-hydroxylase deficiency. Transcript variants encoding different isoforms have been noted for this gene. [provided by RefSeq, Jul 2008],



**Western Blot analysis of various cells using CYP11B1/2 Polyclonal Antibody**