

Cyclophilin F rabbit pAb

Cat#: orb764964 (Manual)

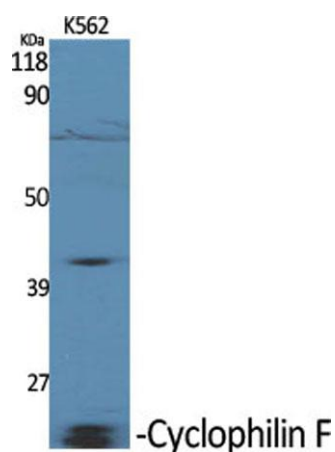
For research use only. Not intended for diagnostic use.

Product Name	Cyclophilin F rabbit pAb
Host species	Rabbit
Applications	WB;IHC;IF;ELISA
Species Cross-Reactivity	Human;Mouse;Rat
Recommended dilutions	Western Blot: 1/500 - 1/2000. Immunohistochemistry: 1/100 - 1/300. Immunofluorescence: 1/200 - 1/1000. ELISA: 1/20000. Not yet tested in other applications.
Immunogen	The antiserum was produced against synthesized peptide derived from human PPIF. AA range:86-135
Specificity	Cyclophilin F Polyclonal Antibody detects endogenous levels of Cyclophilin F protein.
Formulation	Liquid in PBS containing 50% glycerol, 0.5% BSA and 0.02% sodium azide..
Storage	Store at -20°C. Avoid repeated freeze-thaw cycles.
Protein Name	Peptidyl-prolyl cis-trans isomerase F mitochondrial
Gene Name	PPIF
Cellular localization	Mitochondrion matrix .
Purification	The antibody was affinity-purified from rabbit antiserum by affinity-chromatography using epitope-specific immunogen.
Clonality	Polyclonal

Concentration	1 mg/ml
Observed band	22kD
Human Gene ID	10105
Human Swiss-Prot Number	P30405
Alternative Names	PPIF; CYP3; Peptidyl-prolyl cis-trans isomerase F; mitochondrial; PPIase F; Cyclophilin F; Rotamase F

Background

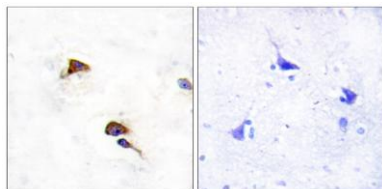
The protein encoded by this gene is a member of the peptidyl-prolyl cis-trans isomerase (PPIase) family. PPIases catalyze the cis-trans isomerization of proline imidic peptide bonds in oligopeptides and accelerate the folding of proteins. This protein is part of the mitochondrial permeability transition pore in the inner mitochondrial membrane. Activation of this pore is thought to be involved in the induction of apoptotic and necrotic cell death. [provided by RefSeq, Jul 2008],



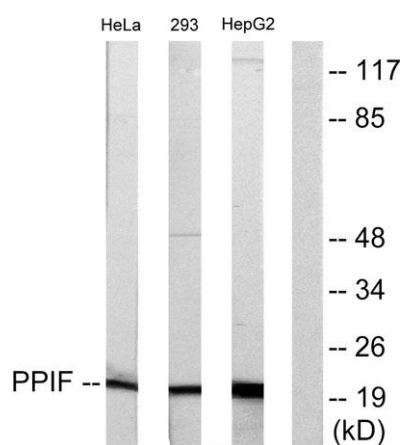
Western Blot analysis of various cells using Cyclophilin F Polyclonal Antibody diluted at 1:2000



Western Blot analysis of HuvEc cells using Cyclophilin F Polyclonal Antibody diluted at 1:2000



Immunohistochemistry analysis of paraffin-embedded human brain tissue, using PPIF Antibody. The picture on the right is blocked with the synthesized peptide.



Western blot analysis of lysates from HepG2, HeLa, and 293 cells, using PPIF Antibody. The lane on the right is blocked with the synthesized peptide.