

Cyclin F rabbit pAb

Cat#: orb764959 (Manual)

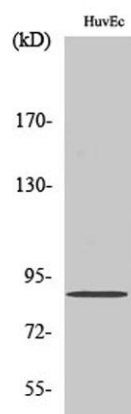
For research use only. Not intended for diagnostic use.

Product Name	Cyclin F rabbit pAb
Host species	Rabbit
Applications	WB;IHC;IF;ELISA
Species Cross-Reactivity	Human;Rat;Mouse;
Recommended dilutions	Western Blot: 1/500 - 1/2000. Immunohistochemistry: 1/100 - 1/300. ELISA: 1/10000. Not yet tested in other applications.
Immunogen	The antiserum was produced against synthesized peptide derived from human Cyclin F. AA range:737-786
Specificity	Cyclin F Polyclonal Antibody detects endogenous levels of Cyclin F protein.
Formulation	Liquid in PBS containing 50% glycerol, 0.5% BSA and 0.02% sodium azide..
Storage	Store at -20°C. Avoid repeated freeze-thaw cycles.
Protein Name	Cyclin-F
Gene Name	CCNF
Cellular localization	Nucleus . Cytoplasm, perinuclear region . Cytoplasm, cytoskeleton, microtubule organizing center, centrosome, centriole . Localization to the centrosome is rare in S phase cells and increases in G2 cells. Localizes to both the mother and daughter centrioles. Localization to centrosomes is not dependent on CP110. Localizes to the nucleus in G2 phase. .
Purification	The antibody was affinity-purified from rabbit antiserum by affinity-chromatography using epitope-specific immunogen.

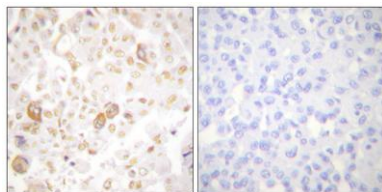
Clonality	Polyclonal
Concentration	1 mg/ml
Observed band	88kD
Human Gene ID	899
Human Swiss-Prot Number	P41002
Alternative Names	CCNF; FBX1; FBXO1; Cyclin-F; F-box only protein 1

Background

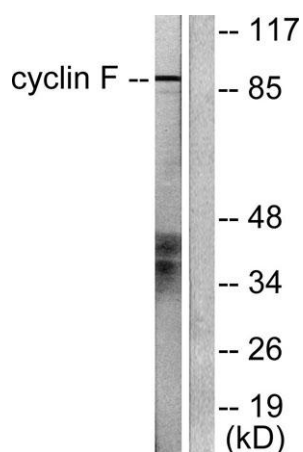
This gene encodes a member of the cyclin family. Cyclins are important regulators of cell cycle transitions through their ability to bind and activate cyclin-dependent protein kinases. This member also belongs to the F-box protein family which is characterized by an approximately 40 amino acid motif, the F-box. The F-box proteins constitute one of the four subunits of the ubiquitin protein ligase complex called SCFs (SKP1-cullin-F-box), which function in phosphorylation-dependent ubiquitination. The F-box proteins are divided into 3 classes: Fbws containing WD-40 domains, Fbls containing leucine-rich repeats, and Fbxs containing either different protein-protein interaction modules or no recognizable motifs. The protein encoded by this gene belongs to the Fbxs class and it was one of the first proteins in which the F-box motif was identified. [provided by RefSeq, Jul 2008],



Western Blot analysis of various cells using Cyclin F Polyclonal Antibody diluted at 1:500 cells nucleus extracted by Minute TM Cytoplasmic and Nuclear Fractionation kit (SC-003, Invent biotech, MN, USA).



Immunohistochemistry analysis of paraffin-embedded human breast carcinoma tissue, using Cyclin F Antibody. The picture on the right is blocked with the synthesized peptide.



Western blot analysis of lysates from HeLa cells, using Cyclin F Antibody. The lane on the right is blocked with the synthesized peptide.