

**CUL-3 rabbit pAb****Cat#: orb764949 (Manual)**

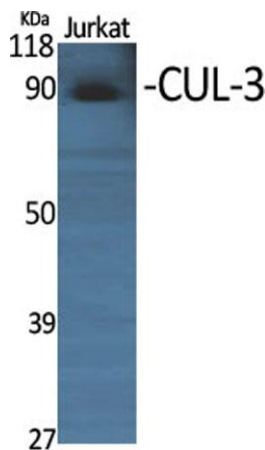
For research use only. Not intended for diagnostic use.

<b>Product Name</b>	CUL-3 rabbit pAb
<b>Host species</b>	Rabbit
<b>Applications</b>	WB;IHC;IF;ELISA
<b>Species Cross-Reactivity</b>	Human;Mouse
<b>Recommended dilutions</b>	Immunohistochemistry: 1/100 - 1/300. ELISA: 1/5000. Not yet tested in other applications.
<b>Immunogen</b>	The antiserum was produced against synthesized peptide derived from human Cullin 3. AA range:1-50
<b>Specificity</b>	CUL-3 Polyclonal Antibody detects endogenous levels of CUL-3 protein.
<b>Formulation</b>	Liquid in PBS containing 50% glycerol, 0.5% BSA and 0.02% sodium azide..
<b>Storage</b>	Store at -20°C. Avoid repeated freeze-thaw cycles.
<b>Protein Name</b>	Cullin-3
<b>Gene Name</b>	CUL3
<b>Cellular localization</b>	Nucleus . Golgi apparatus . Cell projection, cilium, flagellum . Cytoplasm, cytoskeleton, spindle . Cytoplasm. Cytoplasm, cytoskeleton, microtubule organizing center, centrosome . Cytoplasm, cytoskeleton, spindle pole . Detected along the length of the sp
<b>Purification</b>	The antibody was affinity-purified from rabbit antiserum by affinity-chromatography using epitope-specific immunogen.

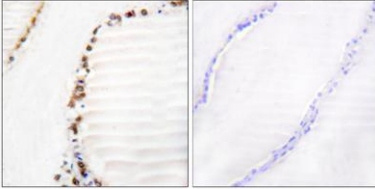
<b>Clonality</b>	Polyclonal
<b>Concentration</b>	1 mg/ml
<b>Observed band</b>	90kD
<b>Human Gene ID</b>	8452
<b>Human Swiss-Prot Number</b>	Q13618
<b>Alternative Names</b>	CUL3; KIAA0617; Cullin-3; CUL-3

**Background**

This gene encodes a member of the cullin protein family. The encoded protein plays a critical role in the polyubiquitination and subsequent degradation of specific protein substrates as the core component and scaffold protein of an E3 ubiquitin ligase complex. Complexes including the encoded protein may also play a role in late endosome maturation. Mutations in this gene are a cause of type 2E pseudohypoaldosteronism. Alternatively spliced transcript variants encoding multiple isoforms have been observed for this gene. [provided by RefSeq, Mar 2012],



**Western Blot analysis of various cells using CUL-3 Polyclonal Antibody diluted at 1:1000**



**Immunohistochemistry analysis of paraffin-embedded human thyroid gland tissue, using Cullin 3 Antibody. The picture on the right is blocked with the synthesized peptide.**