

CTPS rabbit pAb**Cat#: orb764945 (Manual)**

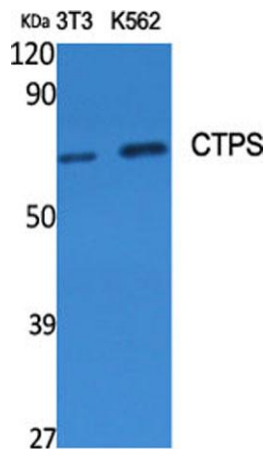
For research use only. Not intended for diagnostic use.

Product Name	CTPS rabbit pAb
Host species	Rabbit
Applications	WB;IHC;IF;ELISA
Species Cross-Reactivity	Human;Mouse;Rat
Recommended dilutions	Western Blot: 1/500 - 1/2000. Immunohistochemistry: 1/100 - 1/300. ELISA: 1/10000. Not yet tested in other applications.
Immunogen	The antiserum was produced against synthesized peptide derived from human CTPS. AA range:60-109
Specificity	CTPS Polyclonal Antibody detects endogenous levels of CTPS protein.
Formulation	Liquid in PBS containing 50% glycerol, 0.5% BSA and 0.02% sodium azide..
Storage	Store at -20°C. Avoid repeated freeze-thaw cycles.
Protein Name	CTP synthase 1
Gene Name	CTPS1
Cellular localization	Cytoplasm, cytosol . Mainly cytosolic but when active detected in long filamentous structures (PubMed:25223282). Co-localizes with TNK2 in the cytosolic filaments (By similarity). .
Purification	The antibody was affinity-purified from rabbit antiserum by affinity-chromatography using epitope-specific immunogen.

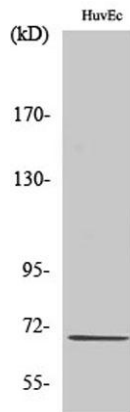
Clonality	Polyclonal
Concentration	1 mg/ml
Observed band	67kD
Human Gene ID	1503
Human Swiss-Prot Number	P17812
Alternative Names	CTPS1; CTPS; CTP synthase 1; CTP synthetase 1; UTP--ammonia ligase 1

Background

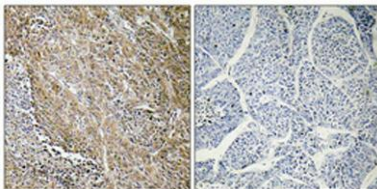
This gene encodes an enzyme responsible for the catalytic conversion of UTP (uridine triphosphate) to CTP (cytidine triphosphate). This reaction is an important step in the biosynthesis of phospholipids and nucleic acids. Activity of this protein is important in the immune system, and loss of function of this gene has been associated with immunodeficiency. Alternative splicing results in multiple transcript variants. [provided by RefSeq, Jul 2014],



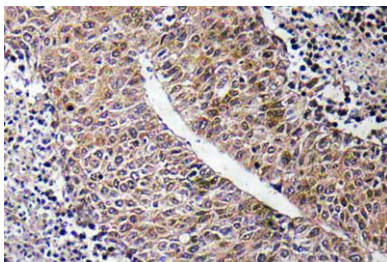
Western Blot analysis of various cells using CTPS Polyclonal Antibody diluted at 1:500



Western Blot analysis of HuvEc cells using CTPS Polyclonal Antibody diluted at 1:500



Immunohistochemical analysis of paraffin-embedded Human lung cancer. Antibody was diluted at 1:100(4° overnight). High-pressure and temperature Tris-EDTA,pH8.0 was used for antigen retrieval. Negative control (right) obtained from antibody was pre-absorbed by immunogen peptide.



Immunohistochemistry analysis of CTPS antibody in paraffin-embedded human liver carcinoma tissue.