

CTDSP1 rabbit pAb**Cat#: orb764944 (Manual)**

For research use only. Not intended for diagnostic use.

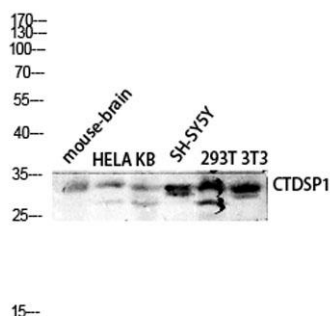
Product Name	CTDSP1 rabbit pAb
Host species	Rabbit
Applications	WB;IHC;IF;ELISA
Species Cross-Reactivity	Human;Mouse;Rat
Recommended dilutions	Western Blot: 1/500 - 1/2000. Immunohistochemistry: 1/100 - 1/300. ELISA: 1/40000. Not yet tested in other applications.
Immunogen	The antiserum was produced against synthesized peptide derived from human CTDSP1. AA range:1-50
Specificity	CTDSP1 Polyclonal Antibody detects endogenous levels of CTDSP1 protein.
Formulation	Liquid in PBS containing 50% glycerol, 0.5% BSA and 0.02% sodium azide..
Storage	Store at -20°C. Avoid repeated freeze-thaw cycles.
Protein Name	Carboxy-terminal domain RNA polymerase II polypeptide A small phosphatase I
Gene Name	CTDSP1
Cellular localization	Nucleus . Colocalizes with RNA polymerase II.
Purification	The antibody was affinity-purified from rabbit antiserum by affinity-chromatography using epitope-specific immunogen.
Clonality	Polyclonal

Concentration	1 mg/ml
Observed band	30kD
Human Gene ID	58190
Human Swiss-Prot Number	Q9GZU7
Alternative Names	CTDSP1; NIF3; NLIIF; SCP1; Carboxy-terminal domain RNA polymerase II polypeptide A small phosphatase 1; Nuclear LIM interactor-interacting factor 3; NLI-IF; NLI-interacting factor 3; Small C-terminal domain phosphatase 1; SCP1; Small CTD ph

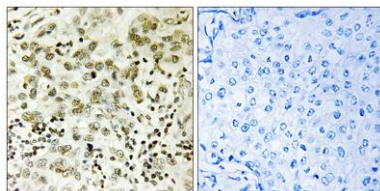
Background CTD small phosphatase 1(CTDSP1) Homo sapiens This gene encodes a member of the small C-terminal domain phosphatase (SCP) family of nuclear phosphatases. These proteins play a role in transcriptional regulation through specific dephosphorylation of phosphoserine 5 within tandem heptapeptide repeats of the C-terminal domain of RNA polymerase II. The encoded protein plays a role in neuronal gene silencing in non-neuronal cells, and may also inhibit osteoblast differentiation. Alternatively spliced transcript variants encoding multiple isoforms have been observed for this gene. [provided by RefSeq, Oct 2011],



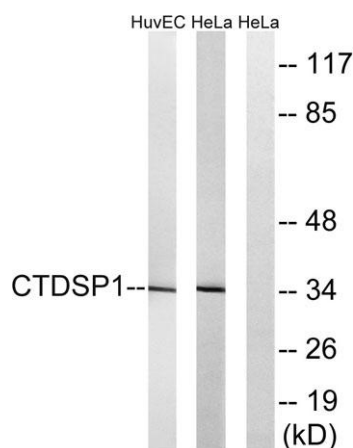
Western Blot analysis of various cells using CTDSP1 Polyclonal Antibody diluted at 1:1000 cells nucleus extracted by Minute TM Cytoplasmic and Nuclear Fractionation kit (SC-003, Invent biotech, MN, USA).



Western blot analysis of mouse-brain HELA KB SH-SY5Y 293T 3T3 lysis using CTDSP1 antibody. Antibody was diluted at 1:1000 cells nucleus extracted by Minute TM Cytoplasmic and Nuclear Fractionation kit (SC-003, Invent biotech, MN, USA).



Immunohistochemistry analysis of paraffin-embedded human breast carcinoma tissue, using CTDSP1 Antibody. The picture on the right is blocked with the synthesized peptide.



Western blot analysis of lysates from HeLa and HUVEC cells, using CTDSP1 Antibody. The lane on the right is blocked with the synthesized peptide.