

**CRSP130 rabbit pAb****Cat#: orb764930 (Manual)**

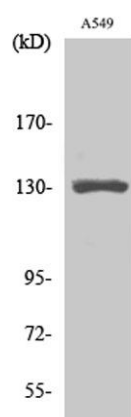
For research use only. Not intended for diagnostic use.

<b>Product Name</b>	CRSP130 rabbit pAb
<b>Host species</b>	Rabbit
<b>Applications</b>	WB;IHC;IF;ELISA
<b>Species Cross-Reactivity</b>	Human;Mouse;Rat
<b>Recommended dilutions</b>	Western Blot: 1/500 - 1/2000. Immunohistochemistry: 1/100 - 1/300. Immunofluorescence: 1/200 - 1/1000. ELISA: 1/5000. Not yet tested in other applications.
<b>Immunogen</b>	The antiserum was produced against synthesized peptide derived from human MED23. AA range:1-50
<b>Specificity</b>	CRSP130 Polyclonal Antibody detects endogenous levels of CRSP130 protein.
<b>Formulation</b>	Liquid in PBS containing 50% glycerol, 0.5% BSA and 0.02% sodium azide..
<b>Storage</b>	Store at -20°C. Avoid repeated freeze-thaw cycles.
<b>Protein Name</b>	Mediator of RNA polymerase II transcription subunit 23
<b>Gene Name</b>	MED23
<b>Cellular localization</b>	Nucleus .
<b>Purification</b>	The antibody was affinity-purified from rabbit antiserum by affinity-chromatography using epitope-specific immunogen.
<b>Clonality</b>	Polyclonal

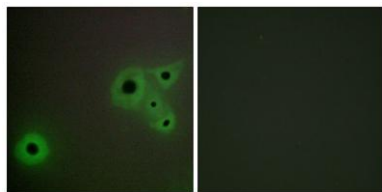
<b>Concentration</b>	1 mg/ml
<b>Observed band</b>	150kD
<b>Human Gene ID</b>	9439
<b>Human Swiss-Prot Number</b>	Q9ULK4
<b>Alternative Names</b>	MED23; ARC130; CRSP3; DRIP130; KIAA1216; SUR2; Mediator of RNA polymerase II transcription subunit 23; Activator-recruited cofactor 130 kDa component; ARC130; Cofactor required for Sp1 transcriptional activation subunit 3; CRSP complex subu

### Background

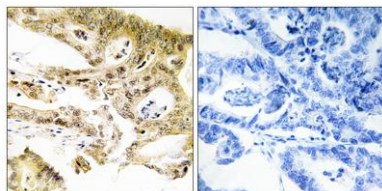
The activation of gene transcription is a multistep process that is triggered by factors that recognize transcriptional enhancer sites in DNA. These factors work with co-activators to direct transcriptional initiation by the RNA polymerase II apparatus. The protein encoded by this gene is a subunit of the CRSP (cofactor required for SP1 activation) complex, which, along with TFIID, is required for efficient activation by SP1. This protein is also a component of other multisubunit complexes e.g. thyroid hormone receptor-(TR-) associated proteins which interact with TR and facilitate TR function on DNA templates in conjunction with initiation factors and cofactors. This protein also acts as a metastasis suppressor. Several alternatively spliced transcript variants encoding different isoforms have been described for this gene. [provided by RefSeq, Jul 2012],



**Western Blot analysis of various cells using CRSP130 Polyclonal Antibody cells nucleus extracted by Minute TM Cytoplasmic and Nuclear Fractionation kit (SC-003, Invent biotech, MN, USA).**



**Immunofluorescence analysis of A549 cells, using MED23 Antibody. The picture on the right is blocked with the synthesized peptide.**



**Immunohistochemistry analysis of paraffin-embedded human colon carcinoma tissue, using MED23 Antibody. The picture on the right is blocked with the synthesized peptide.**