

CPN cat rabbit pAb**Cat#: orb764916 (Manual)**

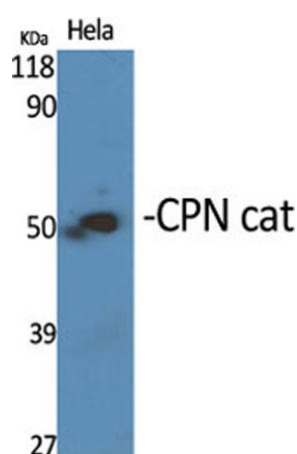
For research use only. Not intended for diagnostic use.

Product Name	CPN cat rabbit pAb
Host species	Rabbit
Applications	WB;ELISA
Species Cross-Reactivity	Human;Rat;Mouse;
Recommended dilutions	Western Blot: 1/500 - 1/2000. ELISA: 1/20000. Not yet tested in other applications.
Immunogen	The antiserum was produced against synthesized peptide derived from human CPN1. AA range:409-458
Specificity	CPN cat Polyclonal Antibody detects endogenous levels of CPN cat protein.
Formulation	Liquid in PBS containing 50% glycerol, 0.5% BSA and 0.02% sodium azide..
Storage	Store at -20°C. Avoid repeated freeze-thaw cycles.
Protein Name	Carboxypeptidase N catalytic chain
Gene Name	CPN1
Cellular localization	Secreted, extracellular space.
Purification	The antibody was affinity-purified from rabbit antiserum by affinity-chromatography using epitope-specific immunogen.
Clonality	Polyclonal

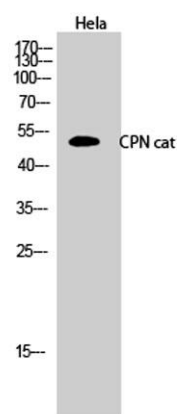
Concentration	1 mg/ml
Observed band	total 52kD,Cleaved 48kD
Human Gene ID	1369
Human Swiss-Prot Number	P15169
Alternative Names	CPN1; ACBP; Carboxypeptidase N catalytic chain; CPN; Anaphylatoxin inactivator; Arginine carboxypeptidase; Carboxypeptidase N polypeptide 1; Carboxypeptidase N small subunit; Kininase-1; Lysine carboxypeptidase; Plasma carboxypeptidase B; S

Background

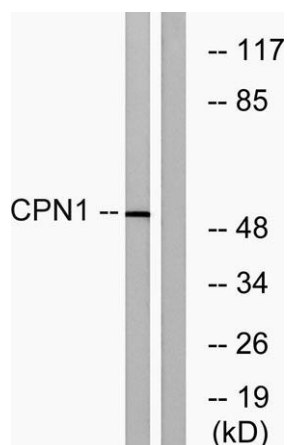
Carboxypeptidase N is a plasma metallo-protease that cleaves basic amino acids from the C terminal of peptides and proteins. The enzyme is important in the regulation of peptides like kinins and anaphylatoxins, and has also been known as kininase-1 and anaphylatoxin inactivator. This enzyme is a tetramer comprised of two identical regulatory subunits and two identical catalytic subunits; this gene encodes the catalytic subunit. Mutations in this gene can be associated with angioedema or chronic urticaria resulting from carboxypeptidase N deficiency. [provided by RefSeq, Jul 2008],



Western Blot analysis of various cells using CPN cat Polyclonal Antibody



Western Blot analysis of HeLa cells using CPN cat Polyclonal Antibody



Western blot analysis of lysates from RAW264.7 cells, using CPN1 Antibody. The lane on the right is blocked with the synthesized peptide.