

CPA5 rabbit pAb**Cat#: orb764913 (Manual)**

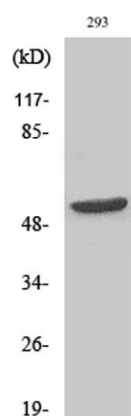
For research use only. Not intended for diagnostic use.

Product Name	CPA5 rabbit pAb
Host species	Rabbit
Applications	WB;ELISA
Species Cross-Reactivity	Human;Mouse
Recommended dilutions	Western Blot: 1/500 - 1/2000. ELISA: 1/20000. Not yet tested in other applications.
Immunogen	The antiserum was produced against synthesized peptide derived from human CPA5. AA range:91-140
Specificity	CPA5 Polyclonal Antibody detects endogenous levels of CPA5 protein.
Formulation	Liquid in PBS containing 50% glycerol, 0.5% BSA and 0.02% sodium azide..
Storage	Store at -20°C. Avoid repeated freeze-thaw cycles.
Protein Name	Carboxypeptidase A5
Gene Name	CPA5
Cellular localization	Secreted .
Purification	The antibody was affinity-purified from rabbit antiserum by affinity-chromatography using epitope-specific immunogen.
Clonality	Polyclonal

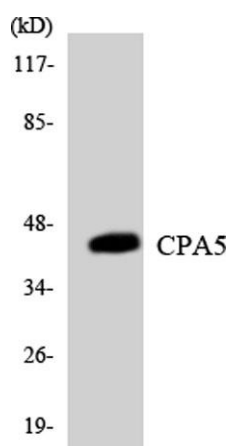
Concentration	1 mg/ml
Observed band	50kD
Human Gene ID	93979
Human Swiss-Prot Number	Q8WXQ8
Alternative Names	CPA5; Carboxypeptidase A5

Background

Carboxypeptidases have functions ranging from digestion of food to selective biosynthesis of neuroendocrine peptides. Members of the A/B subfamily of carboxypeptidases, such as CPA5, contain an approximately 90-amino acid pro region that assists in the folding of the active carboxypeptidase domain. Cleavage of the pro region activates the enzyme (Wei et al., 2002 [PubMed 11836249]).[supplied by OMIM, Mar 2008],



Western Blot analysis of various cells using CPA5 Polyclonal Antibody



Western blot analysis of the lysates from COLO205 cells using CPA5 antibody.