

COL5A1 rabbit pAb**Cat#: orb764900 (Manual)**

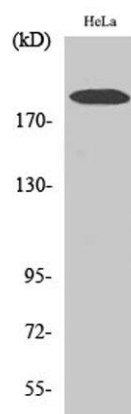
For research use only. Not intended for diagnostic use.

Product Name	COL5A1 rabbit pAb
Host species	Rabbit
Applications	WB;IHC;IF;ELISA
Species Cross-Reactivity	Human;Rat;Mouse;
Recommended dilutions	Western Blot: 1/500 - 1/2000. Immunohistochemistry: 1/100 - 1/300. Immunofluorescence: 1/200 - 1/1000. ELISA: 1/20000. Not yet tested in other applications.
Immunogen	The antiserum was produced against synthesized peptide derived from human Collagen V alpha1. AA range:301-350
Specificity	COL5A1 Polyclonal Antibody detects endogenous levels of COL5A1 protein.
Formulation	Liquid in PBS containing 50% glycerol, 0.5% BSA and 0.02% sodium azide..
Storage	Store at -20°C. Avoid repeated freeze-thaw cycles.
Protein Name	Collagen alpha-1(V) chain
Gene Name	COL5A1
Cellular localization	Secreted, extracellular space, extracellular matrix .
Purification	The antibody was affinity-purified from rabbit antiserum by affinity-chromatography using epitope-specific immunogen.
Clonality	Polyclonal

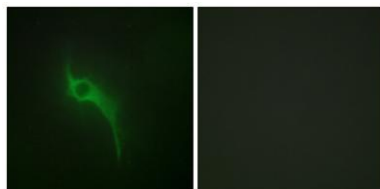
Concentration	1 mg/ml
Observed band	200kD
Human Gene ID	1289
Human Swiss-Prot Number	P20908
Alternative Names	COL5A1; Collagen alpha-1(V) chain

Background

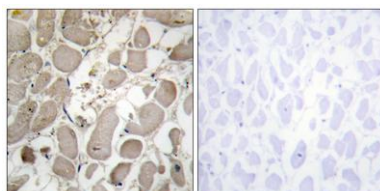
This gene encodes an alpha chain for one of the low abundance fibrillar collagens. Fibrillar collagen molecules are trimers that can be composed of one or more types of alpha chains. Type V collagen is found in tissues containing type I collagen and appears to regulate the assembly of heterotypic fibers composed of both type I and type V collagen. This gene product is closely related to type XI collagen and it is possible that the collagen chains of types V and XI constitute a single collagen type with tissue-specific chain combinations. The encoded procollagen protein occurs commonly as the heterotrimer pro-alpha1(V)-pro-alpha1(V)-pro-alpha2(V). Mutations in this gene are associated with Ehlers-Danlos syndrome, types I and II. Alternative splicing of this gene results in multiple transcript variants. [provided by RefSeq, May 2013],



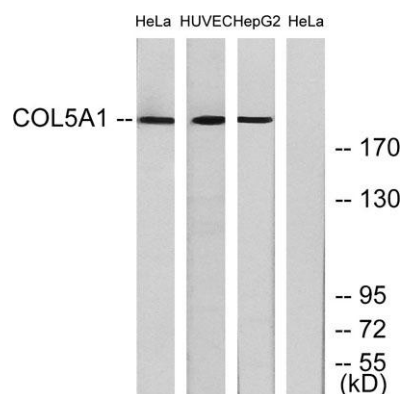
Western Blot analysis of various cells using COL5A1 Polyclonal Antibody



Immunofluorescence analysis of HeLa cells, using Collagen V alpha1 Antibody. The picture on the right is blocked with the synthesized peptide.



Immunohistochemistry analysis of paraffin-embedded human heart tissue, using Collagen V alpha1 Antibody. The picture on the right is blocked with the synthesized peptide.



Western blot analysis of lysates from HeLa, and HUVEC, and HepG2 cells, using Collagen V alpha1 Antibody. The lane on the right is blocked with the synthesized peptide.