

CNT2 rabbit pAb**Cat#: orb764891 (Manual)**

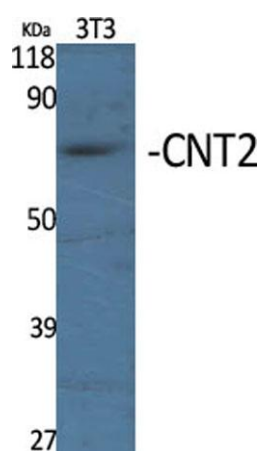
For research use only. Not intended for diagnostic use.

Product Name	CNT2 rabbit pAb
Host species	Rabbit
Applications	WB;IHC;IF;ELISA
Species Cross-Reactivity	Human;Mouse;Rat
Recommended dilutions	Western Blot: 1/500 - 1/2000. Immunohistochemistry: 1/100 - 1/300. ELISA: 1/10000. Not yet tested in other applications.
Immunogen	The antiserum was produced against synthesized peptide derived from human SLC28A2. AA range:371-420
Specificity	CNT2 Polyclonal Antibody detects endogenous levels of CNT2 protein.
Formulation	Liquid in PBS containing 50% glycerol, 0.5% BSA and 0.02% sodium azide..
Storage	Store at -20°C. Avoid repeated freeze-thaw cycles.
Protein Name	Sodium/nucleoside cotransporter 2
Gene Name	SLC28A2
Cellular localization	Membrane ; Multi-pass membrane protein .
Purification	The antibody was affinity-purified from rabbit antiserum by affinity-chromatography using epitope-specific immunogen.
Clonality	Polyclonal

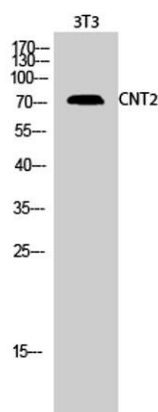
Concentration	1 mg/ml
Observed band	65kD
Human Gene ID	9153
Human Swiss-Prot Number	O43868
Alternative Names	SLC28A2; CNT2; Sodium/nucleoside cotransporter 2; Concentrative nucleoside transporter 2; CNT 2; hCNT2; Na(+)/nucleoside cotransporter 2; Sodium-coupled nucleoside transporter 2; Sodium/purine nucleoside co-transporter; SPNT; Solute carrier

Background

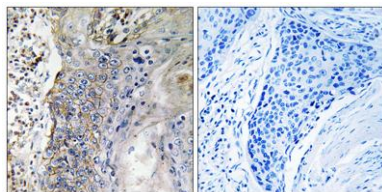
enzyme regulation: Inhibited by formycin B., function: Sodium-dependent and purine-selective transporter. Exhibits the transport characteristics of the nucleoside transport system cif or N1 subtype (N1/cif) (selective for purine nucleosides and uridine). Plays a critical role in specific uptake and salvage of purine nucleosides in kidney and other tissues., similarity: Belongs to the concentrative nucleoside transporter (CNT) (TC 2.A.41) family., tissue specificity: Expressed in heart and skeletal muscle followed by liver, kidney, intestine, pancreas, placenta and brain. Weak expression in lung.,



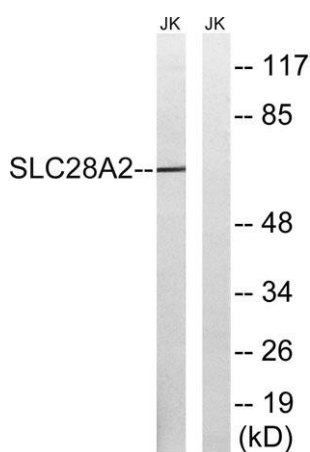
Western Blot analysis of various cells using CNT2 Polyclonal Antibody



Western Blot analysis of 3T3 cells using CNT2 Polyclonal Antibody



Immunohistochemistry analysis of paraffin-embedded human lung carcinoma tissue, using SLC28A2 Antibody. The picture on the right is blocked with the synthesized peptide.



Western blot analysis of lysates from Jurkat cells, using SLC28A2 Antibody. The lane on the right is blocked with the synthesized peptide.