

## CLK4 rabbit pAb

**Cat#: orb764878 (Manual)**

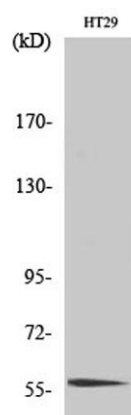
For research use only. Not intended for diagnostic use.

<b>Product Name</b>	CLK4 rabbit pAb
<b>Host species</b>	Rabbit
<b>Applications</b>	WB;IHC;IF;ELISA
<b>Species Cross-Reactivity</b>	Human;Mouse
<b>Recommended dilutions</b>	Western Blot: 1/500 - 1/2000. Immunohistochemistry: 1/100 - 1/300. ELISA: 1/10000. Not yet tested in other applications.
<b>Immunogen</b>	The antiserum was produced against synthesized peptide derived from human CLK4. AA range:101-150
<b>Specificity</b>	CLK4 Polyclonal Antibody detects endogenous levels of CLK4 protein.
<b>Formulation</b>	Liquid in PBS containing 50% glycerol, 0.5% BSA and 0.02% sodium azide..
<b>Storage</b>	Store at -20°C. Avoid repeated freeze-thaw cycles.
<b>Protein Name</b>	Dual specificity protein kinase CLK4
<b>Gene Name</b>	CLK4
<b>Cellular localization</b>	Nucleus .
<b>Purification</b>	The antibody was affinity-purified from rabbit antiserum by affinity-chromatography using epitope-specific immunogen.
<b>Clonality</b>	Polyclonal

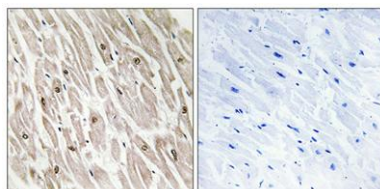
<b>Concentration</b>	1 mg/ml
<b>Observed band</b>	65kD
<b>Human Gene ID</b>	57396
<b>Human Swiss-Prot Number</b>	Q9HAZ1
<b>Alternative Names</b>	CLK4; Dual specificity protein kinase CLK4; CDC-like kinase 4

## Background

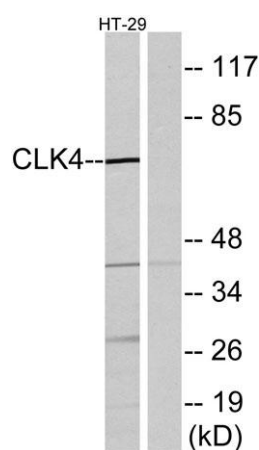
CDC like kinase 4(CLK4) Homo sapiens The protein encoded by this gene belongs to the CDC2-like protein kinase (CLK) family. This protein kinase can interact with and phosphorylate the serine- and arginine-rich (SR) proteins, which are known to play an important role in the formation of spliceosomes, and thus may be involved in the regulation of alternative splicing. Studies in the Israeli sand rat *Psammomys obesus* suggested that the ubiquitin-like 5 (UBL5/BEACON), a highly conserved ubiquitin-like protein, may interact with and regulate the activity of this kinase. Multiple alternatively spliced transcript variants have been observed, but the full-length natures of which have not yet been determined. [provided by RefSeq, Jul 2008],



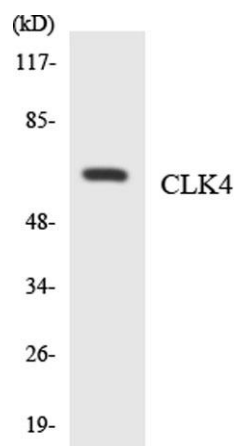
**Western Blot analysis of various cells using CLK4 Polyclonal Antibody cells nucleus extracted by Minute TM Cytoplasmic and Nuclear Fractionation kit (SC-003, Invent biotech, MN, USA).**



**Immunohistochemical analysis of paraffin-embedded Human heart. Antibody was diluted at 1:100(4° overnight). High-pressure and temperature Tris-EDTA,pH8.0 was used for antigen retrieval. Negative contrl (right) obtained from antibody was pre-absorbed by immunogen peptide.**



**Western blot analysis of lysates from HT-29 cells, using CLK4 Antibody. The lane on the right is blocked with the synthesized peptide.**



**Western blot analysis of the lysates from HeLa cells using CLK4 antibody.**