

CHP2 rabbit pAb

Cat#: orb764854 (Manual)

For research use only. Not intended for diagnostic use.

Product Name	CHP2 rabbit pAb
Host species	Rabbit
Applications	WB;ELISA
Species Cross-Reactivity	Human;Mouse;Rat
Recommended dilutions	Western Blot: 1/500 - 1/2000. ELISA: 1/40000. Not yet tested in other applications.
Immunogen	The antiserum was produced against synthesized peptide derived from human CHP2. AA range:101-150
Specificity	CHP2 Polyclonal Antibody detects endogenous levels of CHP2 protein.
Formulation	Liquid in PBS containing 50% glycerol, 0.5% BSA and 0.02% sodium azide..
Storage	Store at -20°C. Avoid repeated freeze-thaw cycles.
Protein Name	Calcineurin B homologous protein 2
Gene Name	CHP2
Cellular localization	Nucleus . Cytoplasm . Cell membrane . Predominantly localized in a juxtannuclear region. Colocalizes with SLC9A3 in the juxtannuclear region and at the plasma membrane (By similarity). Exported from the nucleus to the cytoplasm through a nuclear export sign
Purification	The antibody was affinity-purified from rabbit antiserum by affinity-chromatography using epitope-specific immunogen.

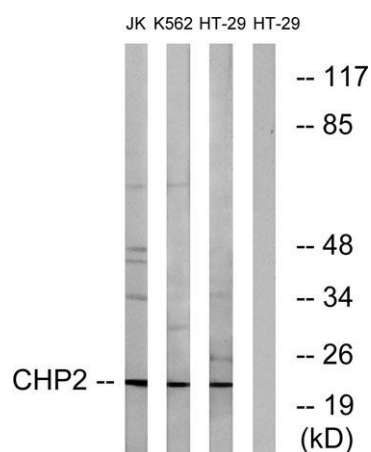
Clonality	Polyclonal
Concentration	1 mg/ml
Observed band	22kD
Human Gene ID	63928
Human Swiss-Prot Number	O43745
Alternative Names	CHP2; HCA520; Calcineurin B homologous protein 2; Hepatocellular carcinoma-associated antigen 520

Background

This gene product is a small calcium-binding protein that regulates cell pH by controlling plasma membrane-type Na⁺/H⁺ exchange activity. This protein shares sequence similarity with calcineurin B and can bind to and stimulate the protein phosphatase activity of calcineurin A (CnA) and functions in the calcineurin/NFAT (nuclear factor of activated T cells) signaling pathway. Another member of the CHP subfamily, Calcineurin B homologous protein 1, is located on Chromosome 15 and is an inhibitor of calcineurin activity and has a genetic phenotype associated with Parkinson's Disease (OMIM:606988). This gene was initially identified as a tumor-associated antigen and was previously referred to as Hepatocellular carcinoma-associated antigen 520. [provided by RefSeq, Jul 2013],



Western Blot analysis of various cells using CHP2 Polyclonal Antibody



Western blot analysis of lysates from HT-29, K562, and Jurkat cells, using CHP2 Antibody. The lane on the right is blocked with the synthesized peptide.