

Choactase rabbit pAb

Cat#: orb764850 (Manual)

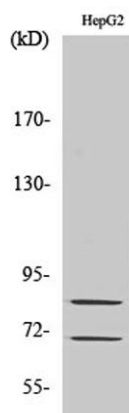
For research use only. Not intended for diagnostic use.

Product Name	Choactase rabbit pAb
Host species	Rabbit
Applications	WB;ELISA
Species Cross-Reactivity	Human;Mouse;Rat
Recommended dilutions	Western Blot: 1/500 - 1/2000. ELISA: 1/10000. Not yet tested in other applications.
Immunogen	The antiserum was produced against synthesized peptide derived from human Choactase. AA range:334-383
Specificity	Choactase Polyclonal Antibody detects endogenous levels of Choactase protein.
Formulation	Liquid in PBS containing 50% glycerol, 0.5% BSA and 0.02% sodium azide..
Storage	Store at -20°C. Avoid repeated freeze-thaw cycles.
Protein Name	Choline O-acetyltransferase
Gene Name	CHAT
Cellular localization	nucleus,cytoplasm,cytosol,presynapse,
Purification	The antibody was affinity-purified from rabbit antiserum by affinity-chromatography using epitope-specific immunogen.
Clonality	Polyclonal

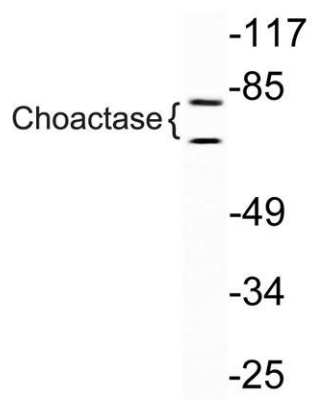
Concentration	1 mg/ml
Observed band	82,70kD
Human Gene ID	1103
Human Swiss-Prot Number	P28329
Alternative Names	CHAT; Choline O-acetyltransferase; CHOACTase; ChAT; Choline acetylase

Background

This gene encodes an enzyme which catalyzes the biosynthesis of the neurotransmitter acetylcholine. This gene product is a characteristic feature of cholinergic neurons, and changes in these neurons may explain some of the symptoms of Alzheimer's disease. Polymorphisms in this gene have been associated with Alzheimer's disease and mild cognitive impairment. Mutations in this gene are associated with congenital myasthenic syndrome associated with episodic apnea. Multiple transcript variants encoding different isoforms have been found for this gene, and some of these variants have been shown to encode more than one isoform. [provided by RefSeq, May 2010],



Western Blot analysis of various cells using Choactase Polyclonal Antibody diluted at 1:1000



Western blot analysis of lysate from HepG2 cells, using Choactase antibody.