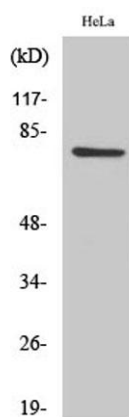


**CEP78 rabbit pAb****Cat#: orb764828 (Manual)**

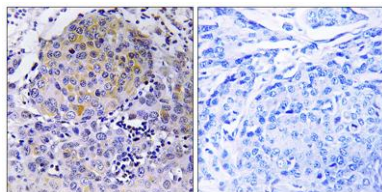
For research use only. Not intended for diagnostic use.

<b>Product Name</b>	CEP78 rabbit pAb
<b>Host species</b>	Rabbit
<b>Applications</b>	WB;IHC;IF;ELISA
<b>Species Cross-Reactivity</b>	Human;Mouse
<b>Recommended dilutions</b>	Western Blot: 1/500 - 1/2000. Immunohistochemistry: 1/100 - 1/300. ELISA: 1/20000. Not yet tested in other applications.
<b>Immunogen</b>	The antiserum was produced against synthesized peptide derived from human CEP78. AA range:301-350
<b>Specificity</b>	CEP78 Polyclonal Antibody detects endogenous levels of CEP78 protein.
<b>Formulation</b>	Liquid in PBS containing 50% glycerol, 0.5% BSA and 0.02% sodium azide..
<b>Storage</b>	Store at -20°C. Avoid repeated freeze-thaw cycles.
<b>Protein Name</b>	Centrosomal protein of 78 kDa
<b>Gene Name</b>	CEP78
<b>Cellular localization</b>	Cytoplasm, cytoskeleton, microtubule organizing center, centrosome . Cytoplasm, cytoskeleton, microtubule organizing center, centrosome, centriole . Cytoplasm, cytoskeleton, cilium basal body . Mainly localizes at the centriolar wall, but also found in the pericentriolar material (PubMed:27246242). Expressed in photoreceptor inner segment (PubMed:27588452). .

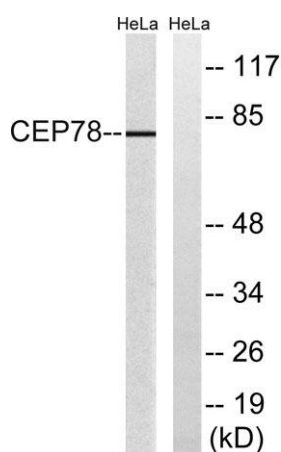
<b>Purification</b>	The antibody was affinity-purified from rabbit antiserum by affinity-chromatography using epitope-specific immunogen.
<b>Clonality</b>	Polyclonal
<b>Concentration</b>	1 mg/ml
<b>Observed band</b>	80kD
<b>Human Gene ID</b>	84131
<b>Human Swiss-Prot Number</b>	Q5JTW2
<b>Alternative Names</b>	CEP78; C9orf81; Centrosomal protein of 78 kDa; Cep78
<b>Background</b>	similarity:Belongs to the CEP78 family.,similarity:Contains 3 LRR (leucine-rich) repeats.,



**Western Blot analysis of various cells using CEP78 Polyclonal Antibody**



**Immunohistochemistry analysis of paraffin-embedded human breast carcinoma tissue, using CEP78 Antibody. The picture on the right is blocked with the synthesized peptide.**



**Western blot analysis of lysates from HeLa cells, using CEP78 Antibody. The lane on the right is blocked with the synthesized peptide.**