

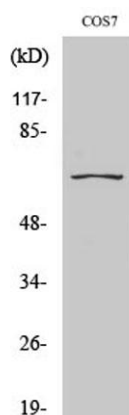
CEP70 rabbit pAb**Cat#: orb764827 (Manual)**

For research use only. Not intended for diagnostic use.

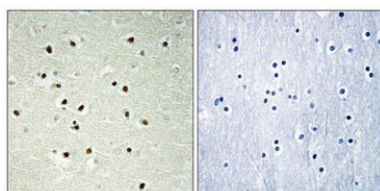
Product Name	CEP70 rabbit pAb
Host species	Rabbit
Applications	WB;IHC;IF;ELISA
Species Cross-Reactivity	Human;Monkey
Recommended dilutions	Western Blot: 1/500 - 1/2000. Immunohistochemistry: 1/100 - 1/300. ELISA: 1/40000. Not yet tested in other applications.
Immunogen	The antiserum was produced against synthesized peptide derived from human CEP70. AA range:241-290
Specificity	CEP70 Polyclonal Antibody detects endogenous levels of CEP70 protein.
Formulation	Liquid in PBS containing 50% glycerol, 0.5% BSA and 0.02% sodium azide..
Storage	Store at -20°C. Avoid repeated freeze-thaw cycles.
Protein Name	Centrosomal protein of 70 kDa
Gene Name	CEP70
Cellular localization	Cytoplasm, cytoskeleton, microtubule organizing center, centrosome . Localized at the center of the radial microtubule array in interphase and at the spindle poles during various stages of mitosis.
Purification	The antibody was affinity-purified from rabbit antiserum by affinity-chromatography using epitope-specific immunogen.

Clonality	Polyclonal
Concentration	1 mg/ml
Observed band	70kD
Human Gene ID	80321
Human Swiss-Prot Number	Q8NHQ1
Alternative Names	CEP70; BITE; Centrosomal protein of 70 kDa; Cep70; p10-binding protein

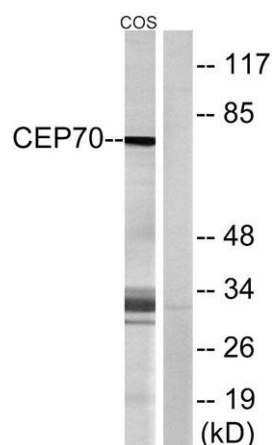
Background similarity:Contains 1 TPR repeat.,



Western Blot analysis of various cells using CEP70 Polyclonal Antibody diluted at 1:2000



Immunohistochemical analysis of paraffin-embedded Human brain. Antibody was diluted at 1:100(4° overnight). High-pressure and temperature Tris-EDTA,pH8.0 was used for antigen retrieval. Negative ctrl (right) obtained from antibody was pre-absorbed by i



Western blot analysis of lysates from COS cells, using CEP70 Antibody. The lane on the right is blocked with the synthesized peptide.