

**CEP170 rabbit pAb****Cat#: orb764824 (Manual)**

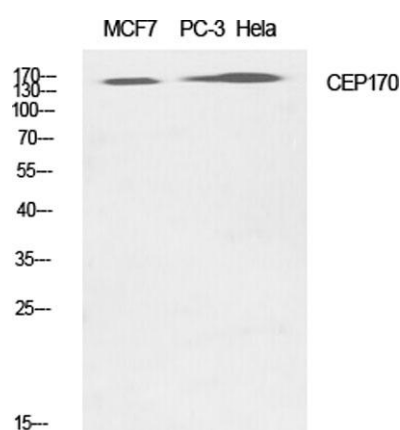
For research use only. Not intended for diagnostic use.

<b>Product Name</b>	CEP170 rabbit pAb
<b>Host species</b>	Rabbit
<b>Applications</b>	WB;IHC;IF;ELISA
<b>Species Cross-Reactivity</b>	Human;Rat;Mouse;
<b>Recommended dilutions</b>	Western Blot: 1/500 - 1/2000. Immunohistochemistry: 1/100 - 1/300. ELISA: 1/40000. Not yet tested in other applications.
<b>Immunogen</b>	The antiserum was produced against synthesized peptide derived from human CEP170. AA range:701-750
<b>Specificity</b>	CEP170 Polyclonal Antibody detects endogenous levels of CEP170 protein.
<b>Formulation</b>	Liquid in PBS containing 50% glycerol, 0.5% BSA and 0.02% sodium azide..
<b>Storage</b>	Store at -20°C. Avoid repeated freeze-thaw cycles.
<b>Protein Name</b>	Centrosomal protein of 170 kDa
<b>Gene Name</b>	CEP170
<b>Cellular localization</b>	Cytoplasm, cytoskeleton, microtubule organizing center, centrosome . Cytoplasm, cytoskeleton, microtubule organizing center, centrosome, centriole . Cytoplasm, cytoskeleton, spindle . Associated with the mature mother centriole. Associated with spindle microtubules during mitosis. Localizes to the distal appendage region of the centriole (PubMed:31789463). Localizes at the centriole proximal ends (PubMed:31789463). .

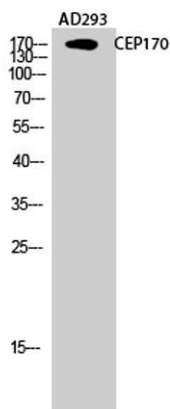
<b>Purification</b>	The antibody was affinity-purified from rabbit antiserum by affinity-chromatography using epitope-specific immunogen.
<b>Clonality</b>	Polyclonal
<b>Concentration</b>	1 mg/ml
<b>Observed band</b>	160kD
<b>Human Gene ID</b>	9859
<b>Human Swiss-Prot Number</b>	Q5SW79
<b>Alternative Names</b>	CEP170; FAM68A; KAB; KIAA0470; Centrosomal protein of 170 kDa; Cep170; KARP-1-binding protein; KARP1-binding protein

**Background**

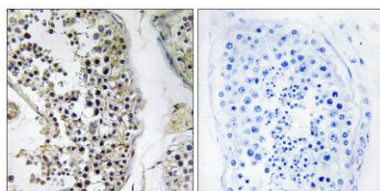
centrosomal protein 170(CEP170) Homo sapiens The product of this gene is a component of the centrosome, a non-membraneous organelle that functions as the major microtubule-organizing center in animal cells. During interphase, the encoded protein localizes to the sub-distal appendages of mature centrioles, which are microtubule-based structures thought to help organize centrosomes. During mitosis, the protein associates with spindle microtubules near the centrosomes. The protein interacts with and is phosphorylated by polo-like kinase 1, and functions in maintaining microtubule organization and cell morphology. The human genome contains a putative transcribed pseudogene. Several alternatively spliced transcript variants of this gene have been found, but the full-length nature of some of these variants has not been determined. [provided by RefSeq, Jul 2008],



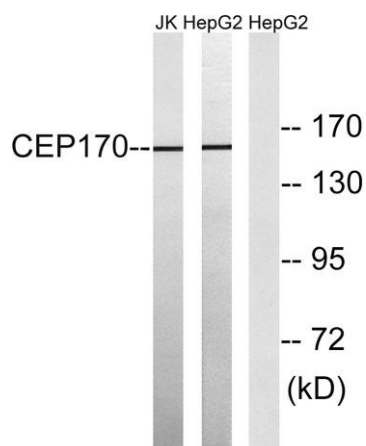
**Western Blot analysis of various cells using CEP170 Polyclonal Antibody diluted at 1:1000**



**Western Blot analysis of AD293 cells using CEP170 Polyclonal Antibody diluted at 1:1000**



**Immunohistochemistry analysis of paraffin-embedded human testis tissue, using CEP170 Antibody. The picture on the right is blocked with the synthesized peptide.**



**Western blot analysis of lysates from HepG2 and Jurkat cells, using CEP170 Antibody. The lane on the right is blocked with the synthesized peptide.**