

## Centrobin rabbit pAb

**Cat#: orb764823 (Manual)**

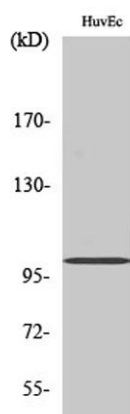
For research use only. Not intended for diagnostic use.

<b>Product Name</b>	Centrobin rabbit pAb
<b>Host species</b>	Rabbit
<b>Applications</b>	WB;IHC;IF;ELISA
<b>Species Cross-Reactivity</b>	Human;Rat;Mouse;
<b>Recommended dilutions</b>	Western Blot: 1/500 - 1/2000. Immunohistochemistry: 1/100 - 1/300. ELISA: 1/5000. Not yet tested in other applications.
<b>Immunogen</b>	The antiserum was produced against synthesized peptide derived from human CNTROB. AA range:591-640
<b>Specificity</b>	Centrobin Polyclonal Antibody detects endogenous levels of Centrobin protein.
<b>Formulation</b>	Liquid in PBS containing 50% glycerol, 0.5% BSA and 0.02% sodium azide..
<b>Storage</b>	Store at -20°C. Avoid repeated freeze-thaw cycles.
<b>Protein Name</b>	Centrobin
<b>Gene Name</b>	CNTROB
<b>Cellular localization</b>	Cytoplasm, cytoskeleton, microtubule organizing center, centrosome, centriole . Centriole-associated, asymmetrically localizes to the daughter centriole.
<b>Purification</b>	The antibody was affinity-purified from rabbit antiserum by affinity-chromatography using epitope-specific immunogen.

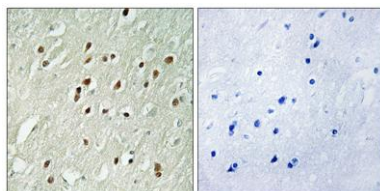
<b>Clonality</b>	Polyclonal
<b>Concentration</b>	1 mg/ml
<b>Observed band</b>	100kD
<b>Human Gene ID</b>	116840
<b>Human Swiss-Prot Number</b>	Q8N137
<b>Alternative Names</b>	CNTROB; LIP8; PP1221; Centrobin; Centrosomal BRCA2-interacting protein; LYST-interacting protein 8

### Background

This gene encodes a centrosomal protein that interacts with BRCA2, and is required for centriole duplication and cytokinesis. Alternatively spliced transcript variants encoding different isoforms have been described for this gene. [provided by RefSeq, Aug 2011],



Western Blot analysis of various cells using Centrobins Polyclonal Antibody



Immunohistochemistry analysis of paraffin-embedded human brain, using CNTROB Antibody. The picture on the right is blocked with the synthesized peptide.