

## Cathepsin E rabbit pAb

**Cat#: orb764746 (Manual)**

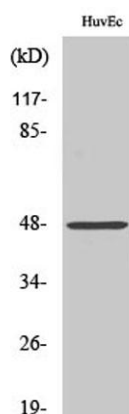
For research use only. Not intended for diagnostic use.

<b>Product Name</b>	Cathepsin E rabbit pAb
<b>Host species</b>	Rabbit
<b>Applications</b>	WB;IHC;IF;ELISA
<b>Species Cross-Reactivity</b>	Human;Mouse;Rat
<b>Recommended dilutions</b>	Western Blot: 1/500 - 1/2000. Immunohistochemistry: 1/100 - 1/300. ELISA: 1/20000. Not yet tested in other applications.
<b>Immunogen</b>	The antiserum was produced against synthesized peptide derived from human Cathepsin E. AA range:243-292
<b>Specificity</b>	Cathepsin E Polyclonal Antibody detects endogenous levels of Cathepsin E protein.
<b>Formulation</b>	Liquid in PBS containing 50% glycerol, 0.5% BSA and 0.02% sodium azide..
<b>Storage</b>	Store at -20°C. Avoid repeated freeze-thaw cycles.
<b>Protein Name</b>	Cathepsin E
<b>Gene Name</b>	CTSE
<b>Cellular localization</b>	Endosome . The proenzyme is localized to the endoplasmic reticulum and Golgi apparatus, while the mature enzyme is localized to the endosome.
<b>Purification</b>	The antibody was affinity-purified from rabbit antiserum by affinity-chromatography using epitope-specific immunogen.
<b>Clonality</b>	Polyclonal

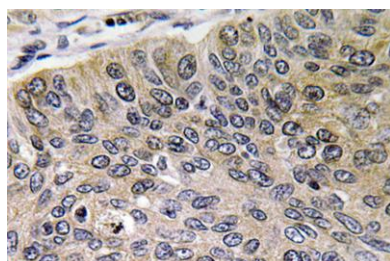
<b>Concentration</b>	1 mg/ml
<b>Observed band</b>	48kD
<b>Human Gene ID</b>	1510
<b>Human Swiss-Prot Number</b>	P14091
<b>Alternative Names</b>	CTSE; Cathepsin E

### Background

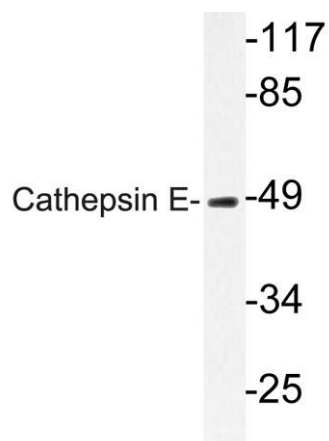
This gene encodes a member of the A1 family of peptidases. Alternative splicing of this gene results in multiple transcript variants. At least one of these variants encodes a preproprotein that is proteolytically processed to generate the mature enzyme. This enzyme, an aspartic endopeptidase, may be involved in antigen processing and the maturation of secretory proteins. Elevated expression of this gene has been observed in neurodegeneration. [provided by RefSeq, Nov 2015],



**Western Blot analysis of various cells using Cathepsin E Polyclonal Antibody**



**Immunohistochemistry analysis of Cathepsin E antibody in paraffin-embedded human lung carcinoma tissue.**



Western blot analysis of lysate from HUVEC cells, using Cathepsin E antibody.