

## Caspase-10 B/D rabbit pAb

**Cat#: orb764726 (Manual)**

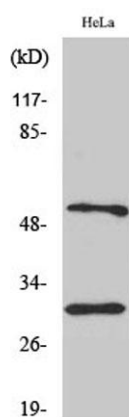
For research use only. Not intended for diagnostic use.

<b>Product Name</b>	Caspase-10 B/D rabbit pAb
<b>Host species</b>	Rabbit
<b>Applications</b>	WB;IHC;IF;ELISA
<b>Species Cross-Reactivity</b>	Human;Rat;Mouse;
<b>Recommended dilutions</b>	Western Blot: 1/500 - 1/2000. Immunohistochemistry: 1/100 - 1/300. Immunofluorescence: 1/200 - 1/1000. ELISA: 1/10000. Not yet tested in other applications.
<b>Immunogen</b>	The antiserum was produced against synthesized peptide derived from human Caspase 10. AA range:430-479
<b>Specificity</b>	Caspase-10 B/D Polyclonal Antibody detects endogenous levels of proCaspase-10 B/D protein, activated Caspase-10 (isoform B and D) and Caspase-10(isoform B and D) subunit p12,
<b>Formulation</b>	Liquid in PBS containing 50% glycerol, 0.5% BSA and 0.02% sodium azide..
<b>Storage</b>	Store at -20°C. Avoid repeated freeze-thaw cycles.
<b>Protein Name</b>	Caspase10
<b>Gene Name</b>	CASP10
<b>Cellular localization</b>	cytosol,CD95 death-inducing signaling complex,riposome,
<b>Purification</b>	The antibody was affinity-purified from rabbit antiserum by affinity-chromatography using epitope-specific immunogen.
<b>Clonality</b>	Polyclonal

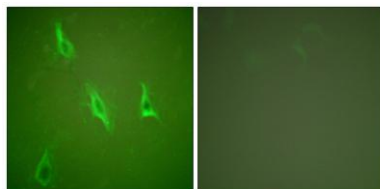
<b>Concentration</b>	1 mg/ml
<b>Observed band</b>	pro: 60kD, activated: 33kD 12kD
<b>Human Gene ID</b>	843
<b>Human Swiss-Prot Number</b>	Q92851-2/4
<b>Alternative Names</b>	ALPS2; apoptotic protease Mch-4; CASP-10; CASPA; caspase-10; FADD-like ICE2; FAS-associated death domain protein interleukin-1B-convert

### Background

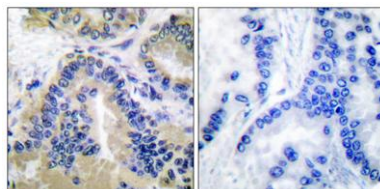
This gene encodes a protein which is a member of the cysteine-aspartic acid protease (caspase) family. Sequential activation of caspases plays a central role in the execution-phase of cell apoptosis. Caspases exist as inactive proenzymes which undergo proteolytic processing at conserved aspartic residues to produce two subunits, large and small, that dimerize to form the active enzyme. This protein cleaves and activates caspases 3 and 7, and the protein itself is processed by caspase 8. Mutations in this gene are associated with type IIA autoimmune lymphoproliferative syndrome, non-Hodgkin lymphoma and gastric cancer. Alternatively spliced transcript variants encoding different isoforms have been described for this gene. [provided by RefSeq, Apr 2011],



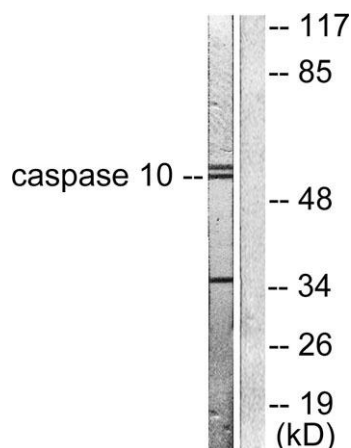
**Western Blot analysis of various cells using Caspase-10 B/C Polyclonal Antibody**



**Immunofluorescence analysis of HeLa cells, using Caspase 10 Antibody. The picture on the right is blocked with the synthesized peptide.**



**Immunohistochemistry analysis of paraffin-embedded human lung carcinoma tissue, using Caspase 10 Antibody. The picture on the right is blocked with the synthesized peptide.**



**Western blot analysis of lysates from HeLa cells, using Caspase 10 Antibody. The lane on the right is blocked with the synthesized peptide.**