

Casein Kinase I γ 1 rabbit pAb**Cat#: orb764724 (Manual)**

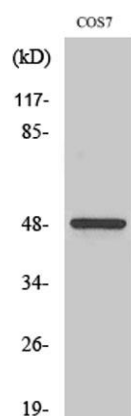
For research use only. Not intended for diagnostic use.

Product Name	Casein Kinase I γ 1 rabbit pAb
Host species	Rabbit
Applications	WB;IHC;IF;ELISA
Species Cross-Reactivity	Human;Mouse;Rat;Monkey
Recommended dilutions	Western Blot: 1/500 - 1/2000. Immunohistochemistry: 1/100 - 1/300. Immunofluorescence: 1/200 - 1/1000. ELISA: 1/20000. Not yet tested in other applications.
Immunogen	The antiserum was produced against synthesized peptide derived from human CKI-gamma1. AA range:1-50
Specificity	Casein Kinase I γ 1 Polyclonal Antibody detects endogenous levels of Casein Kinase I γ 1 protein.
Formulation	Liquid in PBS containing 50% glycerol, 0.5% BSA and 0.02% sodium azide..
Storage	Store at -20°C. Avoid repeated freeze-thaw cycles.
Protein Name	Casein kinase I isoform gamma-1
Gene Name	CSNK1G1
Cellular localization	Cytoplasm.
Purification	The antibody was affinity-purified from rabbit antiserum by affinity-chromatography using epitope-specific immunogen.
Clonality	Polyclonal

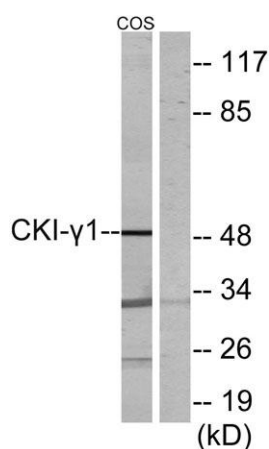
Concentration	1 mg/ml
Observed band	49kD
Human Gene ID	53944
Human Swiss-Prot Number	Q9HCP0
Alternative Names	CSNK1G1; Casein kinase I isoform gamma-1; CKI-gamma 1

Background

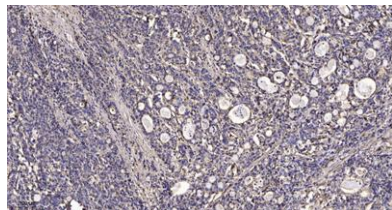
This gene encodes a member of the casein kinase I gene family. This family is comprised of serine/threonine kinases that phosphorylate acidic proteins such as caseins. The encoded kinase plays a role in cell cycle checkpoint arrest in response to stalled replication forks by phosphorylating Claspin. A mutation in this gene may be associated with non-syndromic early-onset epilepsy (NSEOE). [provided by RefSeq, Jul 2016],



Western Blot analysis of various cells using Casein Kinase I γ 1 Polyclonal Antibody



Western blot analysis of lysates from COS7 cells, using CKI-gamma1 Antibody. The lane on the right is blocked with the synthesized peptide.



Immunohistochemical analysis of paraffin-embedded human Gastric adenocarcinoma. 1, Antibody was diluted at 1:200(4° overnight). 2, Tris-EDTA,pH9.0 was used for antigen retrieval. 3,Secondary antibody was diluted at 1:200(room temperature, 45min).