

Carbonyl Reductase 3 rabbit pAb

Cat#: orb764713 (Manual)

For research use only. Not intended for diagnostic use.

Product Name	Carbonyl Reductase 3 rabbit pAb
Host species	Rabbit
Applications	WB;IHC;IF;ELISA
Species Cross-Reactivity	Human;Mouse;Rat
Recommended dilutions	Western Blot: 1/500 - 1/2000. Immunohistochemistry: 1/100 - 1/300. ELISA: 1/40000. Not yet tested in other applications.
Immunogen	The antiserum was produced against synthesized peptide derived from human CBR3. AA range:151-200
Specificity	Carbonyl Reductase 3 Polyclonal Antibody detects endogenous levels of Carbonyl Reductase 3 protein.
Formulation	Liquid in PBS containing 50% glycerol, 0.5% BSA and 0.02% sodium azide..
Storage	Store at -20°C. Avoid repeated freeze-thaw cycles.
Protein Name	Carbonyl reductase [NADPH] 3
Gene Name	CBR3
Cellular localization	Cytoplasm .
Purification	The antibody was affinity-purified from rabbit antiserum by affinity-chromatography using epitope-specific immunogen.
Clonality	Polyclonal

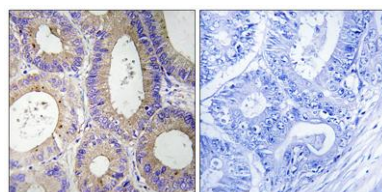
Concentration	1 mg/ml
Observed band	31kD
Human Gene ID	874
Human Swiss-Prot Number	O75828
Alternative Names	CBR3; Carbonyl reductase [NADPH] 3; NADPH-dependent carbonyl reductase 3

Background

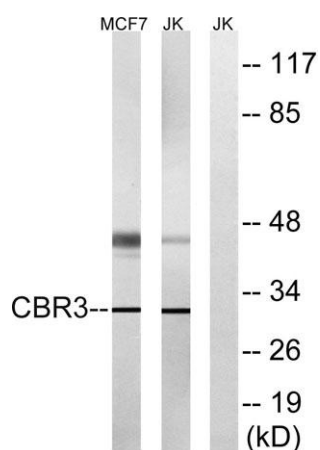
Carbonyl reductase 3 catalyzes the reduction of a large number of biologically and pharmacologically active carbonyl compounds to their corresponding alcohols. The enzyme is classified as a monomeric NADPH-dependent oxidoreductase. CBR3 contains three exons spanning 11.2 kilobases and is closely linked to another carbonyl reductase gene - CBR1. [provided by RefSeq, Jul 2008],



Western Blot analysis of various cells using Carbonyl Reductase 3 Polyclonal Antibody



Immunohistochemistry analysis of paraffin-embedded human colon carcinoma tissue, using CBR3 Antibody. The picture on the right is blocked with the synthesized peptide.



Western blot analysis of lysates from Jurkat and MCF7 cells, using CBR3 Antibody. The lane on the right is blocked with the synthesized peptide.