

Calpain 12 rabbit pAb

Cat#: orb764707 (Manual)

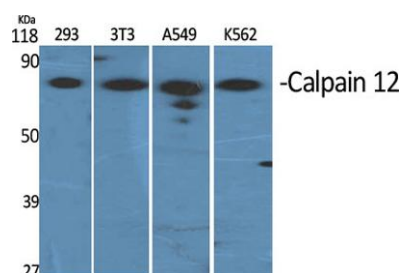
For research use only. Not intended for diagnostic use.

Product Name	Calpain 12 rabbit pAb
Host species	Rabbit
Applications	WB;ELISA
Species Cross-Reactivity	Human;Rat;Mouse;
Recommended dilutions	Western Blot: 1/500 - 1/2000. ELISA: 1/5000. Not yet tested in other applications.
Immunogen	The antiserum was produced against synthesized peptide derived from human CAPN12. AA range:221-270
Specificity	Calpain 12 Polyclonal Antibody detects endogenous levels of Calpain 12 protein.
Formulation	Liquid in PBS containing 50% glycerol, 0.5% BSA and 0.02% sodium azide..
Storage	Store at -20°C. Avoid repeated freeze-thaw cycles.
Protein Name	Calpain-12
Gene Name	CAPN12
Cellular localization	intracellular,cytoplasm,
Purification	The antibody was affinity-purified from rabbit antiserum by affinity-chromatography using epitope-specific immunogen.
Clonality	Polyclonal

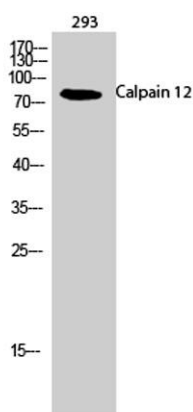
Concentration	1 mg/ml
Observed band	80kD
Human Gene ID	147968
Human Swiss-Prot Number	Q6ZSI9
Alternative Names	CAPN12; Calpain-12; Calcium-activated neutral proteinase 12; CANP 12

Background

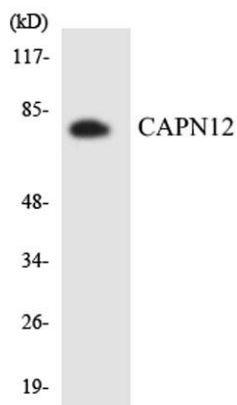
The calpains, calcium-activated neutral proteases, are nonlysosomal, intracellular cysteine proteases. The mammalian calpains include ubiquitous, stomach-specific, and muscle-specific proteins. The ubiquitous enzymes consist of heterodimers with distinct large, catalytic subunits associated with a common small, regulatory subunit. This gene encodes a member of the calpain large subunit family. [provided by RefSeq, Jun 2012],



Western Blot analysis of various cells using Calpain 12 Polyclonal Antibody



Western Blot analysis of 293 cells using Calpain 12 Polyclonal Antibody



Western blot analysis of the lysates from K562 cells using CAPN12 antibody.