

## CAGE-1 rabbit pAb

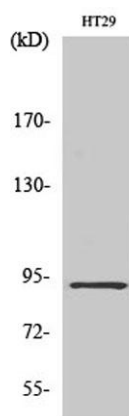
**Cat#: orb764703 (Manual)**

For research use only. Not intended for diagnostic use.

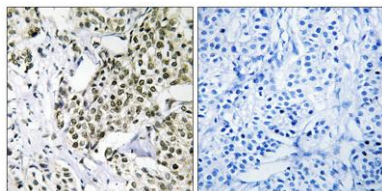
<b>Product Name</b>	CAGE-1 rabbit pAb
<b>Host species</b>	Rabbit
<b>Applications</b>	WB;IHC;IF;ELISA
<b>Species Cross-Reactivity</b>	Human;Rat;Mouse;
<b>Recommended dilutions</b>	Western Blot: 1/500 - 1/2000. Immunohistochemistry: 1/100 - 1/300. ELISA: 1/40000. Not yet tested in other applications.
<b>Immunogen</b>	The antiserum was produced against synthesized peptide derived from human CAGE1. AA range:711-760
<b>Specificity</b>	CAGE-1 Polyclonal Antibody detects endogenous levels of CAGE-1 protein.
<b>Formulation</b>	Liquid in PBS containing 50% glycerol, 0.5% BSA and 0.02% sodium azide..
<b>Storage</b>	Store at -20°C. Avoid repeated freeze-thaw cycles.
<b>Protein Name</b>	Cancer-associated gene 1 protein
<b>Gene Name</b>	CAGE1
<b>Cellular localization</b>	
<b>Purification</b>	The antibody was affinity-purified from rabbit antiserum by affinity-chromatography using epitope-specific immunogen.
<b>Clonality</b>	Polyclonal

<b>Concentration</b>	1 mg/ml
<b>Observed band</b>	90kD
<b>Human Gene ID</b>	285782
<b>Human Swiss-Prot Number</b>	Q8TC20
<b>Alternative Names</b>	CAGE1; CTAG3; Cancer-associated gene 1 protein; CAGE-1; Cancer/testis antigen 3; CT3

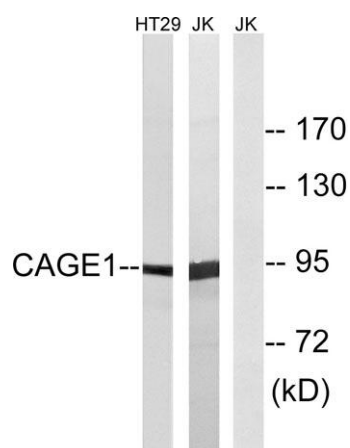
**Background** tissue specificity: Testis-specific expression in normal tissues, but wide expression among cancer tissues and cell lines.,



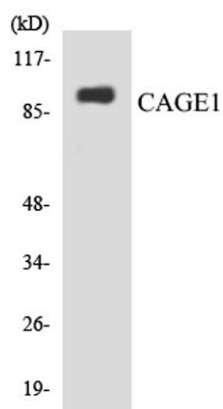
**Western Blot analysis of various cells using CAGE-1 Polyclonal Antibody diluted at 1:2000**



**Immunohistochemistry analysis of paraffin-embedded human breast carcinoma tissue, using CAGE1 Antibody. The picture on the right is blocked with the synthesized peptide.**



Western blot analysis of lysates from HT-29 and Jurkat cells, using CAGE1 Antibody. The lane on the right is blocked with the synthesized peptide.



Western blot analysis of the lysates from HepG2 cells using CAGE1 antibody.